

# WENDEL LIVESTOCK

*Annual Angus Production Sale*

**MAY 10, 2021 • 6 P.M.**

at the farm, near LaMoure, ND

**114 HEAD SELL**

**63 ANGUS BULLS**

**51 ANGUS HEIFERS**

**DVAuction**  
Broadcasting Real-Time Auctions

w<sup>l</sup> [wendellivestock.com](http://wendellivestock.com) w<sup>l</sup>

# WENDEL LIVESTOCK



We would like to invite you to attend our annual production sale to be held at the farm near LaMoure, on May 10, 2021 at 6:00 p.m. The bulls will sell first with the heifers to follow. We have videos of all the sale cattle on [dvauction.com](http://dvauction.com) and it is linked to our website, [wendellivestock.com](http://wendellivestock.com), which also has photos and supplemental information. DVAuction will provide internet bidding, and we will have a video sale inside our sale barn and the cattle will be on display before the sale for viewing. All sale lots are available to see anytime, so come at your convenience. We are happy to help and answer any questions. If unable to make the sale, give us a call anytime. If attending, come early to view the sale cattle and have supper with us.

The bulls we are offering are fed a high roughage ration and are not overfed to hold up in the breeding season. Breeding Soundness Testing is being completed after printing and scrotal measurements and updated SC EPDs will be posted on the website as a supplement. Many of the bulls offered for sale are considered suitable for use on heifers.

We fatten our steers and those we have purchased back from our customers. We are interested in partnering with more of our customers every year that purchase all WL bulls. The steers are sold to Tyson on the Gene Track Grid and they performed well again this year. The 55 steer mates to last year's sale bulls graded 27 (49%) Prime, 45 (82%) Prime and CAB, 55 (100%) Choice or better making \$81.80 net premium per head. Our attention to adding carcass traits to our breeding cattle is paying high dividends in the feedlot. We invite you to come take advantage of the carcass leading genetics we have produced.

We are dedicated to producing cattle that sell above market prices and are willing to assist you in finding the right bull to further develop your program. We will continue to feed the world the best food source anywhere. We hope to see you at the sale.



Mike and Shari Wendel • 10213 68th St. SE, LaMoure, ND 58458  
(701) 883-5254 • Cell (701) 710-0425 • E-mail: [mwendel@drtel.net](mailto:mwendel@drtel.net)  
[www.wendellivestock.com](http://www.wendellivestock.com)

Dennis Wendel • 6793 102nd Ave. SE, LaMoure, ND 58458  
(701) 883-5888 • Cell (701) 793-3511

Shane Wendel • 6480 Hwy. 200, Carrington, ND 58421  
(701) 652-2044 • Cell (701) 652-5810 • E-mail: [smmcarr@daktel.com](mailto:smmcarr@daktel.com)



# Annual Angus Production Sale

Monday • **MAY 10, 2021** • 6 P.M.

at the farm, near LaMoure, ND

**SALE DAY PHONES:** Mike Wendel - (701) 710-0425  
Shane Wendel - (701) 652-5810 • Vern Frey - (701) 721-0344



**AUCTIONEER:**  
Greg Goggins  
(406) 200-1880

**SALE CONSULTANT:**  
Frey Livestock Sales and Service  
(701) 721-0344 • vernfrey55@gmail.com  
Vern Frey, 107 4th Ave. NW, Towner, ND 58708

**LIVESTOCK PUBLICATION REPRESENTATIVES:**  
Kirby Goettsch, Farm & Ranch Guide  
Tony Heins, Cattle Business Weekly


Buyers unable to attend the sale may send their bids to Vern Frey, the Sale Consultant, Field Managers or Auctioneer.

**DIRECTIONS TO THE SALE SITE:** From LaMoure: Take Hwy. 61 north 6 miles, then go east 2 miles on County Road 34, then 1 mile south and then 1 mile west.  
From Hwy. 60: Take County Road 34 west 3 miles, then 1 south and 1 west.

**TERMS AND CONDITIONS:** Cattle will sell under the suggested Terms and Conditions of the American Angus Association ([http://www.angus.org/Pub/suggested\\_sale\\_terms.pdf](http://www.angus.org/Pub/suggested_sale_terms.pdf)).

## **SUPPLEMENTAL INFORMATION:**

Announcements from the auction block take precedence over sale book information. Scrotal measurements will be available online and on sale day. All calves are processed on back of 4-wheeler scale. Enforce 3, 7-Way, Vita-Charge paste are given. Birth weight, DNA sample taken and tagged.

**GENETIC TESTING:** All bulls and a large number of the females have been i50K tested for more accurate EPDs. Those tested have the  logo next to their pedigree.

**HERD HEALTH:** Shots - 7-Way with Pinkeye, PregGuard, Anthrax and Hoofrot vaccine, poured.  
Whole herd Johnes' testing program. Cow herd has been tested free of BVD-P1.  
Health papers will be available sale day for interstate shipment.

**TRUCKING:** Free delivery on all registered lots up to 500 miles. We will work with buyers to assist with delivery.

**LIVESTOCK MORTALITY INSURANCE:** To properly insure your investment, Jason Frey will be available to assist you with mortality insurance (701) 300-0845.

**FOOD AND REFRESHMENTS:** Complimentary Supper and Refreshments.



EPDs contained in the hard copy of this sale book were current as of print date. Digital versions of this sale book can be viewed online at [www.angus.org](http://www.angus.org) and will have EPDs updated every Friday with the exception of EPD references in footnotes and photos. Any PDF downloads from the website will contain EPDs current as of the date downloaded. References: American Angus Association®, AHIR®, AngusSource®, CAB®, Pathfinder®.

## Watch and Bid Online at DVAuction.com

Can't make the sale?

We are pleased to bring you real-time Internet bidding and a live broadcast of this sale through DVAuction. To watch or bid online, simply complete the following steps:

- Visit the DVAuction web site at [www.dvauction.com](http://www.dvauction.com).
- Click on the "Create New Account" tab.
- Enter a user name, password and your contact information.
- Complete the Banking information. (if you are only interested in viewing you can skip this section)
- Select your Time Zone, accept the Terms and Conditions and click, "Create Account"
- Complete the process by answering a few questions, selecting your subscription choices
- Click on "Apply for Bidding" in the upper left corner of your screen to select the sales you wish to bid on
- Be sure to include a personal contact at your bank, we will contact them in order to get a credit reference.
- If you would prefer to be approved using your credit card, call (402) 316-5460.
- Please be sure to apply for bidding at least a day in advance of the sale—every effort will be made to process your application in a timely manner.

DVAuction will contact you once you have been approved to bid. We do not provide buyer numbers until you have purchased a lot in the sale, and that number is only usable for that auction. After the sale, contact the sale owner or manager to make arrangements for payment and delivery of your online purchases.

Please Note: High speed Internet access (DSL, T-1, or Broadband) is required to be able to bid successfully during the sale. If you have any questions, please contact DVAuction at (402) 316-5460 or email [support@dvauction.com](mailto:support@dvauction.com).

**Proxy Bidding:** If you can't access a computer during the sale, you can also place a "proxy bid" through DVAuction. Simply follow the instructions listed above, and as the sale date nears, there will be a "Proxy Bidding" link under the sale listing on the main page of DVAuction. You can then place the maximum amount that you'd like to bid, and our system will represent your bid just as if you were there.

**DVAuction**  
Broadcasting Real-Time Auctions



# WENDEL LIVESTOCK ANGUS BULLS



**WL Excitement 056 - Lot 1**



**WL 0035 Fancy Beauty 435-953 - Grandam of Lot 1.**

**1**

## WL Excitement 056

Birth Date: 03-08-2020

Bull 19832321

Tattoo: 056

#\*Basin Excitement  
\*TLC Excitement 245  
18440207 +\*TLC Blackcap 243

ANGUS GS  
Powered by iStock

#+\*Connealy Courage 25L  
+\*WL 25L Fancy Beauty 953-581  
18405623 WL 0035 Fancy Beauty 435-953

+Basin Expedition R156  
Basin Lady S532 AK  
#+\*SAV Angus Valley 1867  
Fairdales Blackcap 21  
#\*Connealy Confidence 0100  
Pearl Pammy of Conanga 194  
#\*SAV Final Answer 0035  
WL 5321 Fancy Beauty 231-435

ADJ. IMF	Ratio
3.12	91
Adj. RE	Ratio
16.0	113
Adj. Rib Fat	Dam's WR
.32	4-107

CED	BEPD	WEPD	YEPD	SC	MILK	CW	Marb	RE		
+11	+1.3	+79	+143	+1.51	+33	+75	+17	+93		
BW	205 WT	Ratio	365 WT	Ratio	ADG	RATIO	\$M	\$W	\$B	\$C
97	768	111	1326	112	3.52	110	+78	+88	+160	+286

- A standout since birth, this Excitement 245 son was easy to find in the pasture all summer and in the lot all winter. He is the most massive, wide-constructed 245 son to date. His Courage dam is 4@107 nursing ratio and had the Lot 4 bull last year to Brad Beckstrand of Warwick, ND. His granddam, WL 0035 Fancy Beauty 435-953, is a cornerstone flush dam who runs deep in our cow herd. He will add growth, muscle shape, and carcass quality to his calves. His \$M ranks in top 4% of breed as his great maternal traits will make excellent replacements.
- Suitable for heifers and cows.



**TLC Excitement 245 - Sire of Lots 1, 2, 20, 24-26, 36, 38, 49, 55, 60, 61, 70 & 81.**



**Mohnen Jilt 1665 - Grandam of Lot 2.**

1665 was a part of a very productive flush at Mohnen Angus. Her famous flush sister 1655 runs deep at Mohnen Angus and 1665 is having a large impact at Wendel Livestock. Lot 2 bull comes from the Jilt cow family of 1665 and productivity runs deep. All of the Jilt dams in many sale lot pedigrees trace back to this great dam. She is pictured at 12 years of age when we sold her back to Jerod Mohnen where he flushed her successfully several times. We are excited to have this powerful cow family in our herd.

**2**

## WL Excitement 006W

Birth Date: 02-28-2020

Bull \*19834170

Tattoo: 006W

#\*Basin Excitement  
\*TLC Excitement 245  
18440207 +\*TLC Blackcap 243

ANGUS GS  
Powered by iStock

#+\*Basin Payweight 1682  
+\*WL 1682 Jilt 1665-818W  
19383767 +\*Mohnen Jilt 1665

+Basin Expedition R156  
Basin Lady S532 AK  
#+\*SAV Angus Valley 1867  
Fairdales Blackcap 21  
#+\*Basin Payweight 0065  
21AR O Lass 7017  
#+Wulffs Ext 6106  
#Mohnen Jilt 910

ADJ. IMF	Ratio
3.03	107
Adj. RE	Ratio
14.1	103
Adj. Rib Fat	Dam's WR
.42	1-115

CED	BEPD	WEPD	YEPD	SC	MILK	CW	Marb	RE		
+5	+4	+87	+150	+1.15	+32	+76	+59	+37		
BW	205 WT	Ratio	365 WT	Ratio	ADG	RATIO	\$M	\$W	\$B	\$C
80	818	115	1336	111	3.89	117	+94	+103	+155	+295

- A phenotype standout that checks all the boxes with confidence. He is long-bodied and necked with extra depth and mass. His dam is a great young Payweight daughter that ratioed 1@116 weaning weight and has a very bright future. His granddam, Mohnen Jilt 1165, served as a donor and has added many productive powerful cows in our herd.
- Suitable for large framed heifers and cows.



**WL Excitement 006W - Lot 2**



# WENDEL LIVESTOCK ANGUS BULLS



## WL Accomplishment014

Birth Date: 02-22-2020

Bull \*19834183

Tattoo: 014

\*Poss Achievement

Poss Lasting Impact 3118

\*Sitz Accomplishment 720F

\*Poss Erica 327

19078208 Sitz Barbamere Nell 166D

#+\*SAV Resource 1441

ANGUS

\*S Powerpoint WS 5503

Tehama Revere

\*WL 5503 Mignonne 212-8107

\*S Queen Essa 248

19384701 WL 7374 Mignonne 601-212

#\*Connealy Mentor 7374

WL 2878 Mignonne 797-601

ADJ. IMF	Ratio
4.96	145
Adj. RE	Ratio
16.2	114
Adj. Rib Fat	Dam's WR
.45	1-110

CED	BEPD	WEPD	YEPD	SC	MILK	CW	Marb	RE		
+8	+1.4	+75	+119	+45	+19	+54	+67	+64		
BW	205 WT	Ratio	365 WT	Ratio	ADG	RATIO	\$M	\$W	\$B	\$C
79	759	110	1292	110	3.15	98	+80	+76	+139	+260

- An Accomplishment son that could have easily started the sale. This herd bull prospect is massive made from front to rear. He is thick-topped, deep, wide-quartered bull that resembles the entire sire group. This bull is backed by generations of good-uddered, angular productive females.
- Suitable for large framed heifers and cows.



WL Accomplishment014 - Lot 3



## WL Legendary 001

Birth Date: 02-11-2020

Bull \*19832313

Tattoo: 001

#+\*Quaker Hill Rampage 0A36

#MCC Daybreak

\*Connealy Legendary 644L

+\*QHF Blackcap 6E2 of 4V16 4355

18534952 \*Jazzed of Conanga 4660

#Morgans Direction 111 9901

ANGUS

\*S Powerpoint WS 5503

Tehama Revere

\*WL 5503 Ms Blackbird 609-804

\*S Queen Essa 248

19384690 WL 1385 Ms Blackbird 4103-60

#\*Connealy Comrade 1385

WL 213 Ms Blackcap 712-4103

ADJ. IMF	Ratio
6.56	192
Adj. RE	Ratio
14.5	102
Adj. Rib Fat	Dam's WR
.32	1-94

CED	BEPD	WEPD	YEPD	SC	MILK	CW	Marb	RE		
+17	-3.7	+53	+93	+61	+38	+32	+1.12	+74		
BW	205 WT	Ratio	365 WT	Ratio	ADG	RATIO	\$M	\$W	\$B	\$C
70	651	94	1184	100	3.43	107	+79	+79	+135	+254

- This Legendary son is packed full of muscle from end to end. He has lots of rib shape and is very attractive from the side profile. He is a sure-fire heifer bull with EPDs of CED and BW in top 1% of breed. He is backed by 3 generations of calving ease with Powerpoint and Comrade on the bottom of his pedigree. This carcass trait leader has a Marb EPD in top 10% without sacrificing muscle.
- Suitable for heifers and cows.



WL Legendary 001 - Lot 4



## WL Cowboy Up 063

Birth Date: 03-09-2020

Bull 19832311

Tattoo: 063

\*HA Cowboy Up 5405

\*HA Outside 3008

PF Cowboy Up 804

#\*HA Blackcap Lady 1602

19241241 PF Emblynette 214

#MCATL Pure Product 903-55

ANGUS

\*S Powerpoint WS 5503

#Sitz Traveler 8180

WL 0035 Rosebud 281-479

SAV Emulous 8145

17942003 +\*WL FP Rosebud 529-281

#\*Connealy Final Product

#WL GM Toby Rosebud L2-529

ADJ. IMF	Ratio
3.08	90
Adj. RE	Ratio
13.1	92
Adj. Rib Fat	Dam's WR
.33	5-100

CED	BEPD	WEPD	YEPD	SC	MILK	CW	Marb	RE		
+3	+2.7	+87	+147	+1.88	+22	+58	+60	+45		
BW	205 WT	Ratio	365 WT	Ratio	ADG	RATIO	\$M	\$W	\$B	\$C
90	773	112	1248	106	3.06	95	+49	+79	+144	+236

- This powerfully outlined bull is big-topped and quartered and has extra stature and bone. He is sired by Cowboy Up 804. We purchased him from Peterson Farms for his power, muscle mass and ability to sire extra pounds. His Final Answer dam is a phenotypical standout from the Toby Rosebud cow family that is the largest of our herd as she rises to the top end of this family. His maternal brother was one of the top lots sold last year to Phil Brademeyer, Oakes, ND. This bull will add extra payweight to your next calf crop.
- Suitable for cows.



WL Cowboy Up 063 - Lot 5



PF Cowboy Up 804 - Sire of Lots 5, 37 & 48.

Our pick of the bulls at the 2019 North Dakota State Select Sale from Peterson Farms. This Cowboy Up X Pure Product X Final Answer son is loaded with muscle and performance. His calves follow his growth and muscle characteristics, and his pedigree is strong in maternal strength. He is the sire of Lots 5, 37, 48, 67 and 76.



# WENDEL LIVESTOCK ANGUS BULLS



## WL Chisum 022

Birth Date: 02-24-2020

Bull \*19838576

Tattoo: 022

#\*S Chisum 6175  
#S Chisum 255  
17298481 #S Blossom 0278

S Alliance 3313  
#S Gloria 464  
#\*Shipwheel Chinook  
#S Blossom 8378

ANGUS

\*WL Comrade 610

#\*Connealy Comrade 1385

WL 610 Ms Queedy 9114-849

\*WL 213 Rosebud 2107-490

19382876 WL 788 Ms Queedy 423-9114

S Expedition 788

WL 878 Ms Queedy 234-423

ADJ. IMF	Ratio
4.90	144
Adj. RE	Ratio
15.1	106
Adj. Rib Fat	Dam's WR
.32	1-109

CED	BEPD	WEPD	YEPD	SC	MILK	CW	Marb	RE		
+14	+3	+77	+131	+87	+20	+63	+50	+75		
BW	205 WT	Ratio	365 WT	Ratio	ADG	RATIO	\$M	\$W	\$B	\$C
77	754	109	1268	107	3.10	97	+64	+77	+151	+260

- We keep using Chisum 255 because of our confidence in his ability to sire calving ease, maternal strength, outstanding phenotype and longevity. This bull has those qualities with added growth and power. He catches your eye with his phenotype as he is very structurally sound. He is deep middled and carries it back through his rear quarter. This well-rounded heifer bull has all the characteristics of 255 with added power and growth.
- Suitable for heifers and cows.



WL Cavalry 001W - Lot 8



WL Patriarch 050 - Lot 7



## WL Cavalry 001W

Birth Date: 01-21-2020

Bull \*19832305

Tattoo: 001W

#\*Connealy Cavalry 1149

#\*Connealy Consensus

\*JVC Cavalry V3326

+Brissett Forever W857

+Brista of Conanga 927T

17784803

#\*TC Franklin 619

#Brissett Forever 827

ANGUS

#\*RB Active Duty 010

#\*LCC New Standard

+\*ICC Forever Lady 1429-8520

+\*BA Lady 6807 305

19166158 MCATL Forever Lady 1429-138

#\*SAV Final Answer 0035

ALC Forever Lady R02S

ADJ. IMF	Ratio
3.14	111
Adj. RE	Ratio
13.5	99
Adj. Rib Fat	Dam's WR
.38	1-97

CED	BEPD	WEPD	YEPD	SC	MILK	CW	Marb	RE		
+4	+2.2	+75	+133	+87	+22	+51	+46	+50		
BW	205 WT	Ratio	365 WT	Ratio	ADG	RATIO	\$M	\$W	\$B	\$C
86	692	97	1294	107	3.52	106	+39	+68	+133	+212

- The only Calvary son in the sale that merits attention. He is a thick made, deep ribbed, wide based bull that is massive in his construction. We purchased 18 embryos out of MCATL Forever Lady 1429-138, who is the dam to Musgrave Aviator at ORigen, and 001W's dam to add this powerful, productive dam's progeny into our herd. She has delivered very well with multiple powerful daughters that will enter our herd and 4 sons or grandsons in this year's sale. Lots 8, 13, 15, and 39. Suitable for cows.



## WL Patriarch 050

Birth Date: 03-07-2020

Bull \*19834175

Tattoo: 050

\*SS Niagara Z29

#\*Hoover Dam

\*Tehama Patriarch F028

18981191 Tehama Elite Blackbird D826

Jet SS X144

#Connealy Thunder

Tehama Elite Blackbird Z630

ANGUS

#\*Connealy Comrade 1385

#\*Connealy Consensus 7229

WL 1385 Jilt 3106-6126

Happy Gee of Conanga 919

18694690 +WL 6175 Jilt 1665-3106

#\*S Chisum 6175

+\*Mohnen Jilt 1665

ADJ. IMF	Ratio
2.93	86
Adj. RE	Ratio
15.8	111
Adj. Rib Fat	Dam's WR
.33	3-101

CED	BEPD	WEPD	YEPD	SC	MILK	CW	Marb	RE		
+13	-1.1	+60	+103	+29	+20	+43	+46	+90		
BW	205 WT	Ratio	365 WT	Ratio	ADG	RATIO	\$M	\$W	\$B	\$C
77	681	99	1132	96	2.87	89	+78	+63	+132	+249

- The first Patriarch son in the sale that sets the stage for the rest. Patriarch sires positive phenotype that excel in every maternal trait. His dam, 6126, is a Comrade daughter that comes from the Jilt cow family and goes back to our flush dam Mohnen Jilt 1665. She will enter our donor program because of her ability to produce the best year after year. 050 is a moderate, smooth shouldered, free moving bull with added carcass traits. This easy going, good natured Patriarch son will demand your attention sale day.
- Suitable for heifers and cows.



MCATL Forever Lady 1429-138 - Grandam of Lot 8.

The dam of ORigen's Musgrave Aviator and a consistent proven producer of maternal excellence and performance with production of BW 4@97, WW 4@108, YW 3@108, IMF 3@102 and RE 3@101. We had the opportunity to purchase 18 embryos of 3 matings to add this cow family into our herd. We are selling 3 sons and 1 grandson, Lots 8, 13, 15 and 39. Lot 13 is a full brother to the now-deceased Aviator and 15 and 39 are Capitalist 316 sons that are loaded with performance and muscle from this great maternal donor.



# WENDEL LIVESTOCK ANGUS BULLS



**WL Accomplishment 041 - Lot 9**

## 11 WL Accomplishment 051

Birth Date: 03-07-2020

Bull 19834200

Tattoo: 051

\*Poss Achievement  
\*Sitz Accomplishment 720F

19078208 Sitz Barabamere Nell 166D

ANGUSGS

\*WL Confidence 392

WL 392 Miss Queedy 766-5116

18266291 WL 312 Miss Queedy 595-766

Poss Lasting Impact 3118

\*Poss Erica 327

#+\*SAV Resource 1441

Sitz Barabamere Nell 14Y

\*Connealy Confidence 0100

WL 0035 Fancy Beauty 435-953

WL 1407 New Design 312

#WL 2385 Miss Queedy 206-595

ADJ. IMF	Ratio
3.68	108
Adj. RE	Ratio
13.2	93
Adj. Rib Fat	Dam's WR
.44	4-103

CED	BEPD	WEPD	YEPD	SC	MILK	CW	Marb	RE		
+14	-8	+62	+112	+80	+23	+51	+75	+16		
BW	205 WT	Ratio	365 WT	Ratio	ADG	RATIO	\$M	\$W	\$B	\$C
80	711	103	1204	102	3.06	95	+71	+65	+141	+254

- A wide-topped, deep-quartered, well-patterned Accomplishment son. His dam, 5116, has an impressive production record of 4@103 NR and has a nice tidy udder. This free-moving bull hits his tracks when he moves, excels in marbling and is in the top of breed for calving ease.
- Suitable for heifers and cows.



## WL Accomplishment 041

Birth Date: 03-03-2020

Bull \*19834194

Tattoo: 041

\*Poss Achievement

\*Sitz Accomplishment 720F

19078208 Sitz Barabamere Nell 166D

ANGUSGS

#\*Connealy Comrade 1385

WL 1385 Lass 514-704

18983827 WL 028 Lass 358-514

Poss Lasting Impact 3118

\*Poss Erica 327

#+\*SAV Resource 1441

Sitz Barabamere Nell 14Y

#\*Connealy Consensus 7229

Happy Gee of Conanga 919

#\*Connealy Capitalist 028

WL 1220 Lass 739-358

ADJ. IMF	Ratio
5.48	161
Adj. RE	Ratio
14.5	102
Adj. Rib Fat	Dam's WR
.40	2-103

CED	BEPD	WEPD	YEPD	SC	MILK	CW	Marb	RE		
+16	-2.8	+60	+114	+1.40	+19	+41	+.85	+.55		
BW	205 WT	Ratio	365 WT	Ratio	ADG	RATIO	\$M	\$W	\$B	\$C
65	726	105	1219	103	3.43	107	+69	+61	+134	+243

- Another great Accomplishment son that defines moderate framed, thick, easy-going herd bull prospect. He is massive hiped, deep quartered, and has good phenotype merits. This calving ease specialist, (top 1% and 2% for CED and BW EPDs) has bred-in growth and carcass excellence. His Lass dam X Comrade, 704, has a near perfect udder. She is very angular in her design and has a docile disposition.
- Suitable for heifers and cows.



**WL Accomplishment 053 - Lot 12**



## WL Patriarch 026

Birth Date: 02-25-2020

Bull \*19834172

Tattoo: 026

\*SS Niagara Z29

\*Tehama Patriarch F028

18981191 Tehama Elite Blackbird D826

ANGUSGS

#+\*Basin Payweight 1682

WL 1682 Rosebud 5174-8122

19383731 WL 2439 Rosebud 2107-5174

#\*Hoover Dam

Jet SS X144

#Connealy Thunder

Tehama Elite Blackbird Z630

#+\*Basin Payweight 0065

21AR O Lass 7017

S Packer 2439

+\*WL FP Rosebud 529-2107

ADJ. IMF	Ratio
4.69	138
Adj. RE	Ratio
12.8	90
Adj. Rib Fat	Dam's WR
.39	1-96

CED	BEPD	WEPD	YEPD	SC	MILK	CW	Marb	RE		
+16	-3.4	+64	+124	+34	+33	+44	+.91	+.61		
BW	205 WT	Ratio	365 WT	Ratio	ADG	RATIO	\$M	\$W	\$B	\$C
70	661	96	1186	101	3.61	112	+85	+81	+146	+274

- A Patriarch son that is moderate framed and backed with maternal power on both sides of his pedigree. His genetic profile is second to none as he offers calving ease, growth, and carcass quality. His dam, 8122 a past 4-H project, that is moderate framed, long necked, square hiped, great udder, quiet disposition that can be scratched when visited in pasture.
- Suitable for heifers and cows.



## WL Accomplishment 053

Birth Date: 03-07-2020

Bull 19834203

Tattoo: 053

\*Poss Achievement

\*Sitz Accomplishment 720F

19078208 Sitz Barabamere Nell 166D

ANGUSGS

#\*Connealy Confidence 0100

WL 0100 Eleanor 101-422

17942114 WL 5682 Eleanor 934-101

Poss Lasting Impact 3118

\*Poss Erica 327

#+\*SAV Resource 1441

Sitz Barabamere Nell 14Y

Connealy Tobin

Becka Gala of Conanga 8281

#+SAV Bismarck 5682

WL 0035 Eleanor 582-934

ADJ. IMF	Ratio
3.18	93
Adj. RE	Ratio
13.8	97
Adj. Rib Fat	Dam's WR
.45	4-98

CED	BEPD	WEPD	YEPD	SC	MILK	CW	Marb	RE		
+16	-2.5	+59	+113	+78	+27	+54	+.50	+.50		
BW	205 WT	Ratio	365 WT	Ratio	ADG	RATIO	\$M	\$W	\$B	\$C
73	666	96	1199	101	3.24	101	+72	+68	+146	+261

- Another outstanding Accomplishment son that has extra length from end to end and is wide in his pin set. His dam, 422, is a moderate framed, easy fleshing, great uddered Confidence daughter. This bull excels in both Claw and Angle foot EPDs and also in carcass merits. He is a rugged bull that is top 1% and 2% in CED and BW EPDs making him a calving ease specialist.
- Suitable for heifers and cows.



# WENDEL LIVESTOCK ANGUS BULLS



**WL Identity 011W - Lot 13**



**WL Justified 074 - Lot 14**



**Musgrave Aviator - Full brother to Lot 13.**

The now-deceased ORigen sire with medium frame size, great depth of body, and heavy muscled. A "sleep-all-night" calving-ease bull with high accuracy double-digit Calving Ease Direct and minus Birth Weight EPDs, great feet and docile disposition. Full brother to Lot 13 and maternal brother to Lots 15 and 39.

## 13 WL Identity 011W

Birth Date: 03-09-2020

Bull +\*19840362

Tattoo: 011W

#Sitz Upward 307R

#\*Connealy Onward  
Sitz Henrietta Pride 81M  
#+GAR Exaltation 3144  
B&B Erica 4064

##Koupals B&B Identity  
16710463 #B&B Erica 605

ANGUSGS  
Powered by NRC/USDA

##SAV Final Answer 0035

#Sitz Traveler 8180  
SAV Emulous 8145  
#+Leachman Right Time  
ALC Forever Lady K14P

MCATL Forever Lady 1429-138

16483505 ALC Forever Lady R02S

CED	BEPD	WEPD	YEPD	SC	MILK	CW	Marb	RE		
+2	+1.5	+60	+107	+1.43	+26	+41	+52	+75		
BW	205 WT	Ratio	365 WT	Ratio	ADG	RATIO	\$M	\$W	\$B	\$C
82	726	100	1124	100	2.87	93	+66	+63	+135	+241

- Full brother to Musgrave Aviator. This Identity son is wide constructed and very muscular in his build. He is bold about his rib design and very extended in his front 1/3. Maternal brothers are Lots 15 and 39 and great maternal brother is Lot 8.
- Suitable for cows.

## 14 WL Justified 074

Birth Date: 03-12-2020

Bull 19835737

Tattoo: 074

Connealy Judgment  
#\*KG Justified 3023  
17707279 KG Miss Magic 1443

ANGUSGS  
Powered by NRC/USDA

##\*Connealy Impression

Princess 344 BCBR

17626403 Princess 1307 BCBR

#\*Connealy Consensus 7229  
#Entrine of Conanga 9876  
#\*Sitz Wisdom 481T  
KG Miss Magic 3528  
#Connealy Reflection  
Pearl Pammy of Conanga 194  
#\*Sitz Dash 10277  
Princess 8320 BCBR

ADJ. IMF	Ratio
4.04	118
Adj. RE	Ratio
14.0	99
Adj. Rib Fat	Dam's WR
.34	6-103

FIMMS 0320 DECK										
CED	BEPD	WEPD	YEPD	SC	MILK	CW	Marb	RE		
+6	+1.2	+78	+134	+1.38	+28	+49	+.77	+.45		
BW	205 WT	Ratio	365 WT	Ratio	ADG	RATIO	\$M	\$W	\$B	\$C
73	786	114	1271	108	3.15	98	+70	+85	+134	+244

- The only Justified son in the offering that will catch your eye. He is very attractive from the side profile as he is level topped and sets into a wide level hip. His time-tested dam, 344, is 6@103 NR and is excellent footed and uddered. He offers lots of rib and excels in marbling EPD and Heifer Pregnancy EPD. He should sire very functional replacements. A growth bull that has lots to offer.
- Suitable for cows.



**Three generations of livestock judges, Mike, Ryder, Reed, Rose and Dennis. Reed, Rose and Ryder are privileged to represent North Dakota in the National FFA contest in Indianapolis this Fall.**



# WENDEL LIVESTOCK ANGUS BULLS

## 15 WL Capitalist 0136

Birth Date: 03-27-2020

Bull \*19840367

Tattoo: 0136

#\*Connealy Capitalist 028

#\*SAV Final Answer 0035

+\*LD Capitalist 316

Prides Pita of Conanga 8821

17666102 LD Dixie Erica 2053

#CA Future Direction 5321

LD Dixie Erica Oar 0853

ANGUSGS

#\*SAV Final Answer 0035

#Sitz Traveler 8180

MCATL Forever Lady 1429-138

SAV Emulous 8145

16483505 ALC Forever Lady R02S

#+Leachman Right Time

ALC Forever Lady K14P

ADJ. IMF	Ratio
3.46	113
Adj. RE	Ratio
13.8	97
Adj. Rib Fat	Dam's WR
.44	4-108

CED	BEPD	WEPD	YEPD	SC	MILK	CW	Marb	RE		
+6	+1.7	+78	+134	+94	+30	+63	+63	+64		
BW	205 WT	Ratio	365 WT	Ratio	ADG	RATIO	\$M	\$W	\$B	\$C
97	832	100	1320	100	3.47	109	+60	+87	+151	+256

- 0136 If you are looking for a high growth and performance Capitalist son, you have found him. This large outlined bull has plenty of length of spine. He is the 2nd highest 205 wt bull at 832 pounds. He is a maternal brother to Musgrave Aviator, Lot 13 and full brother to Lot 39. This bull excels in growth and carcass traits.

- Suitable for cows.



WL Capitalist 0136 - Lot 15

## 16 WL Accomplishment 071

Birth Date: 03-12-2020

Bull 19834209

Tattoo: 071

\*Poss Achievement

Poss Lasting Impact 3118

\*Sitz Accomplishment 720F

\*Poss Erica 327

19078208 Sitz Barbaramere Nell 166D

#+\*SAV Resource 1441

Sitz Barbaramere Nell 14Y

ANGUSGS

#+SAV Bismarck 5682

#+\*GAR Grid Maker

WL 5682 LadyBlackcap 839-004

SAV Abigale 0451

16711964 WL 420 Lady Blackcap 565-839

WL E161 Precision 420

WL 2385 LadyBlackcap 268-565

ADJ. IMF	Ratio
3.34	98
Adj. RE	Ratio
14.9	105
Adj. Rib Fat	Dam's WR
.30	8-97

CED	BEPD	WEPD	YEPD	SC	MILK	CW	Marb	RE		
+4	+2.1	+71	+116	+1.43	+10	+47	+76	+81		
BW	205 WT	Ratio	365 WT	Ratio	ADG	RATIO	\$M	\$W	\$B	\$C
87	714	103	1116	94	2.78	87	+61	+52	+153	+259

- An Accomplishment son that excels in many categories of his EPD profile. He is a high growth, fertile, carcass standout that carries great maternal traits. A long sided, long striding, good hiped, growth bull you won't want to miss.

- Suitable for cows.



WL Accomplishment 071 - Lot 16

## 17 WL Capitalist 012W

Birth Date: 03-10-2020

Bull \*19835675

Tattoo: 012W

#\*SAV Final Answer 0035

#Sitz Traveler 8180

#\*Connealy Capitalist 028

SAV Emulous 8145

16752262 Prides Pita of Conanga 8821

#CRA Bextor 872 5205 608

Prides Trav of Conanga 6499

ANGUSGS

#\*JMB Traction 292

#\*Sitz Top Game 561X

+\*WL 292 Lady 0100-715W

\*JMB Emulota 013

18983885 +\*RB Lady Standard 305-0100

#\*LCC New Standard

+\*BA Lady 6807 305

ADJ. IMF	Ratio
2.56	90
Adj. RE	Ratio
14.4	105
Adj. Rib Fat	Dam's WR
.41	2-96

CED	BEPD	WEPD	YEPD	SC	MILK	CW	Marb	RE		
+6	+2.5	+85	+149	+1.67	+37	+67	+53	+94		
BW	205 WT	Ratio	365 WT	Ratio	ADG	RATIO	\$M	\$W	\$B	\$C
85	766	108	1321	109	3.24	97	+67	+96	+160	+275

- A Capitalist son that is extended fronted, smooth shouldered, big middled and big hiped and excels on his EPD profile. He is top 2% for both WW and YW EPDs and high Marb and RE. If you sell your calves off the cow, 012W ranks in top 1% for weaning value.

- Suitable for cows.



WL Capitalist 012W - Lot 17



# WENDEL LIVESTOCK ANGUS BULLS

## 18 WL Accomplishment 065

Birth Date: 03-09-2020

Bull 19834201

Tattoo: 065

\*Poss Achievement  
\*Sitz Accomplishment 720F

19078208 Sitz Barbaramere Nell 166D

ANGUSGS

#\*Connealy Consensus 7229

WL 7229 Ava Lee 883-446

17942152 WL 420 Ava Lee 339-883

Poss Lasting Impact 3118

\*Poss Erica 327

#+\*SAV Resource 1441

Sitz Barbaramere Nell 14Y

#\*Connealy Consensus

Blue Lilly of Conanga 16

WL E161 Precision 420

BPR Ava Lee 339

ADJ. IMF	Ratio
2.78	82
Adj. RE	Ratio
13.6	96
Adj. Rib Fat	Dam's WR
.39	5-102

CED	BEPD	WEPD	YEPD	SC	MILK	CW	Marb	RE		
+11	-7	+63	+95	+26	+21	+34	+53	+40		
BW	205 WT	Ratio	365 WT	Ratio	ADG	RATIO	\$M	\$W	\$B	\$C
81	694	100	1104	93	2.59	81	+82	+72	+108	+222

- A moderate framed Accomplishment son that has as much muscle down his topline as any bull in the sale. He excels in fleshing ability as his energy dollars are in the top 20% for efficiency. He is easy going like his dam who also has a nice udder and breeds up year after year. A moderate birth bull that excels in carcass and maternal indexes.
- Suitable for heifers and cows.



WL Excitement 0111 - Lot 20



WL Accomplishment 015 - Lot 19

## 20 WL Excitement 0111

Birth Date: 03-22-2020

Bull 19832302

Tattoo: 0111

#\*Basin Excitement

\*TLC Excitement 245

18440207 +\*TLC Blackcap 243

ANGUSGS

\*WL Confidence 392

#WL 392 Clova Pride 3140-589

18266321 WL X1 Clova Pride X97-3140

+Basin Expedition R156

Basin Lady S532 AK

#+\*SAV Angus Valley 1867

Fairdales Blackcap 21

#\*Connealy Confidence 0100

WL 0035 Fancy Beauty 435-953

WRA Warrior X1

Brusett Clova Pride X97

ADJ. IMF	Ratio
3.59	105
Adj. RE	Ratio
14.0	99
Adj. Rib Fat	Dam's WR
.48	4-105

CED	BEPD	WEPD	YEPD	SC	MILK	CW	Marb	RE		
+9	-1.7	+64	+121	+26	+27	+53	+41	+32		
BW	205 WT	Ratio	365 WT	Ratio	ADG	RATIO	\$M	\$W	\$B	\$C
77	704	102	1262	107	3.98	124	+79	+73	+130	+248

- A long fronted, long sided bull that is good hipped and deep in his rear quarter. He is free striding in motion and tracks wide in his base width. He is backed by a Pathfinder Cow that goes back to our donor Clova Pride X97. This mild-mannered bull is in the top 5% for heifer pregnancy EPD and 4% for \$Maternal.
- Suitable for heifers and cows.



Brusett Clova Pride X97 - Third dam of Lot 20.

This dam came to us from the Brusett dispersion in Montana. She wasn't here long before we decided to move her to donor status. She is a powerful, gentle cow with a nice udder that has worked well no matter what she is mated to. X97 is extremely sound with plenty of flex to her pasterns and moves with ease. She is the 3rd dam to Lot 20 and is present in several pedigrees in the sale.

## 19 WL Accomplishment 015

Birth Date: 02-22-2020

Bull 19834181

Tattoo: 015

\*Poss Achievement  
\*Sitz Accomplishment 720F

19078208 Sitz Barbaramere Nell 166D

ANGUSGS

#+\*Basin Payweight 1682

WL 1682 Miss Queedy 457-844

19746416 +WL 9115 Miss Queedy 595-457

Poss Lasting Impact 3118

\*Poss Erica 327

#+\*SAV Resource 1441

Sitz Barbaramere Nell 14Y

#+\*Basin Payweight 0065

21AR O Lass 7017

#\*SAV Brand Name 9115

#WL 2385 Miss Queedy 206-595

ADJ. IMF	Ratio
3.02	89
Adj. RE	Ratio
13.1	92
Adj. Rib Fat	Dam's WR
.36	1-102

IWE 2505 Miss Quality 200 555										150	160
CED	BEPD	WEPD	YEPD	SC	MILK	CW	Marb	RE			
+6	+1	+65	+118	+80	+18	+54	+62	+44			
BW	205 WT	Ratio	365 WT	Ratio	ADG	RATIO	\$M	\$W	\$B	\$C	
73	706	102	1173	99	3.15	98	+56	+59	+151	+252	

- A long sided, bold ribbed bull that is very smooth fronted. He stems from a productive line of cows, Miss Queedy, that trace back to his great granddam flush cow 595. He follows his sire, Accomplishment, for growth, carcass quality with extra muscle.
- Suitable for cows.



# WENDEL LIVESTOCK ANGUS BULLS



**RB Lady Standard 305-0100 - Dam of Lot 21.**

RB Lady Standard 305-0100 was a great addition to Wendel Livestock. This full sister to the famous RB Lady Standard 305-890, Active Duty and maternal sister to Tour of Duty has left her mark on our herd. She is a very productive dam, BR 6@99, WR 6@102 and YR 4@104. She also carried a calving interval of 6@379 while being flushed and breeding back. She has maintained an excellent udder, sound feet and has an excellent disposition. Her daughters have been excellent mothers that have tidy udders. She was sold to Haugen Cattle Co., Bruner Angus, and Vern Frey after receiving 62 embryos in 3 flushes. Dam of Lot 21.



**WL Tribute 087 - Lot 23**

## 21 WL Bomber 023W

Birth Date: 03-20-2020

Bull +\*19837255

Tattoo: 023W

#+\*KM Broken Bow 002  
\*Casino Bomber N33  
18658677 #\*Casino Annie K48

ANGUSGS

#\*LCC New Standard

+\*RB Lady Standard 305-0100  
16728858 +\*BA Lady 6807 305

#\*Summitcrest Complete 1P55  
#Summitcrest Princess 0P12  
DPL Upward L70  
Casino Annie G64  
#Bon View New Design 1407  
LCC Sunset K3118  
#Vermilion Dateline 7078  
+GD Lady Hi Flyer 302

ADJ. IMF	Ratio
3.43	112
Adj. RE	Ratio
12.7	96
Adj. Rib Fat	Dam's WR
.30	7-102

CED	BEPD	WEPD	YEPD	SC	MILK	CW	Marb	RE		
+6	+1.3	+81	+129	+22	+31	+65	+42	+75		
BW	205 WT	Ratio	365 WT	Ratio	ADG	RATIO	\$M	\$W	\$B	\$C
90	758	100	1294	100	3.33	107	+61	+91	+145	+249

- This Bomber son is a high indexing bull that has lots of length and growth. His donor dam, 0100, is a full sister to the famous RB Lady Standard 305-890 and Active Duty. We have 5 direct daughters in our herd with a combined average weaning ratio of 104. The Lady cow family is loaded with performance and carcass quality traits.
- Suitable for cows.

## 23 WL Tribute 087

Birth Date: 03-16-2020

Bull 19848402

Tattoo: 087

+Mc Cumber Tremendous 2008  
18844381 #\*Lassie 113 of Mc Cumber

ANGUSGS

#\*AAR Ten X 7008 SA

WL 7008 Erica 3120-521

18269283 WL 7229 Erica 848-3120

#+OCC Tremendous 619T  
#+Miss Wix 2022 HC Mc Cumber  
#\*OCC Missing Link 830M  
#Lassie 935 OF Mc Cumber

#\*Mytty In Focus

#AAR Lady Kelton 5551

#\*Connealy Consensus 7229

WL 587 Erica 515-848

ADJ. IMF	Ratio
2.73	80
Adj. RE	Ratio
15.0	106
Adj. Rib Fat	Dam's WR
.37	4-99

CED	BEPD	WEPD	YEPD	SC	MILK	CW	Marb	RE		
+12	-.4	+53	+106	+1.54	+33	+34	+18	+.67		
BW	205 WT	Ratio	365 WT	Ratio	ADG	RATIO	\$M	\$W	\$B	\$C
82	670	97	1179	100	3.61	112	+76	+68	+110	+219

- The leadoff Tribute son is very complete in his design. We used Tribute on our larger framed high growth cows that resulted in a nice combination of sound structured, easy fleshing, well balanced maternal bulls. 087 is a good example of this cross-type mating. This bull will add muscle, feed efficiency, and fleshing ability to his calves.
- Suitable for heifers and cows.

## 22 WL Accomplishment 007

Birth Date: 02-21-2020

Bull \*19834190

Tattoo: 007

\*Poss Achievement  
\*Sitz Accomplishment 720F  
19078208 Sitz Barbamere Nell 166D

ANGUSGS

WL Fortunate 645

WL 645 Fancy Beauty 581-8150

19382884 +WL 25L Fancy Beauty 953-581

Poss Lasting Impact 3118  
\*Poss Erica 327  
#+\*SAV Resource 1441  
Sitz Barbamere Nell 14Y  
Mc Cumber Fortunate 213  
WL 7008 Blackbird 168-305  
WL 0035 Fancy Beauty 435-953

ADJ. IMF	Ratio
3.62	106
Adj. RE	Ratio
14.6	103
Adj. Rib Fat	Dam's WR
.37	1-109

WT 6035 Fatness 455 555										57	169
CED	BEPD	WEPD	YEPD	SC	MILK	CW	Marb	RE			
+1	+1.9	+75	+138	+1.29	+31	+61	+30	+57			
BW	205 WT	Ratio	365 WT	Ratio	ADG	RATIO	\$M	\$W	\$B	\$C	
91	756	109	1346	114	3.89	121	+56	+77	+136	+232	

- A large outlined high performing Accomplishment son that stands out in the pen. He is wide and muscular down his top and carries it back into his hind quarter. His Fortunate 645 dam did a great job with a NR of 110%. His granddam is a power cow and is dam to Lot 1.
- Suitable for cows.



**WL Accomplishment 007 - Lot 22**



# WENDEL LIVESTOCK ANGUS BULLS

## 24 WL Excitement 012

Birth Date: 02-22-2020

Bull \*19832316

Tattoo: 012

#\*Basin Excitement  
\*TLC Excitement 245  
18440207 +\*TLC Blackcap 243

ANGUSGS  
Powered by NECEV

\*WL Comrade 610  
WL 610 Miss Queedy 3150-851

19382889 #WL 071 Miss Queedy 148-3150

+Basin Expedition R156  
Basin Lady S532 AK  
#\*SAV Angus Valley 1867  
Fairdales Blackcap 21

\*Connealy Comrade 1385

\*WL 213 Rosebud 2107-490

+WL Final Answer 071

WL 6175 Miss Queedy 258-148

ADJ. IMF	Ratio
4.39	129
Adj. RE	Ratio
15.7	111
Adj. Rib Fat	Dam's WR
.42	1-104

CED	BEPD	WEPD	YEPD	SC	MILK	CW	Marb	RE		
+13	-5	+66	+120	+.99	+24	+40	+.89	+.56		
BW	205 WT	Ratio	365 WT	Ratio	ADG	RATIO	\$M	\$W	\$B	\$C
74	717	104	1250	106	3.33	104	+65	+70	+139	+245

- This 245 son's EPD profile is as balanced as they come. A big-middled, high-capacity bull will sire performance calves. His 610 dam, 851, is a docile, moderate, deep middled, and nice uddered cow. A high marbling bull that will inject carcass traits into his offspring.
- Suitable for heifers and cows.



WL Excitement 004 - Lot 26



WL Excitement 008 - Lot 25

## 26 WL Excitement 004

Birth Date: 02-17-2020

Bull \*19832314

Tattoo: 004

#\*Basin Excitement  
\*TLC Excitement 245  
18440207 +\*TLC Blackcap 243

ANGUSGS  
Powered by NECEV

\*HA Cowboy Up 5405

WL 5405 Pride 483-8117

19383819 WL 7374 Pride 800-483

+Basin Expedition R156  
Basin Lady S532 AK  
#\*SAV Angus Valley 1867  
Fairdales Blackcap 21

\*HA Outside 3008

\*HA Blackcap Lady 1602

\*Connealy Mentor 7374

#Clearwater 004 Pride U09

ADJ. IMF	Ratio
1.97	58
Adj. RE	Ratio
14.3	101
Adj. Rib Fat	Dam's WR
.40	1-109

CED	BEPD	WEPD	YEPD	SC	MILK	CW	Marb	RE		
+14	-1.5	+65	+112	+.62	+15	+29	+.20	+.31		
BW	205 WT	Ratio	365 WT	Ratio	ADG	RATIO	\$M	\$W	\$B	\$C
71	756	109	1183	100	2.41	75	+68	+63	+87	+181

- This light birth 245 son is out a productive cow family that is very angular, deep ribbed and high in maternal ability. He is a moderate framed bull with extra width and muscle that will complement most cows.
- Suitable for heifers and cows.

## 25 WL Excitement 008

Birth Date: 02-21-2020

Bull \*19832315

Tattoo: 008

#\*Basin Excitement  
\*TLC Excitement 245  
18440207 +\*TLC Blackcap 243

ANGUSGS  
Powered by NECEV

\*S Revere 5125

\*WL 5125 Blackbird 618-867

19382885 WL 0100 Blackbird 413-618

+Basin Expedition R156  
Basin Lady S532 AK  
#\*SAV Angus Valley 1867  
Fairdales Blackcap 21

Tehama Revere

#S Cora 011

\*Connealy Confidence 0100

WL 2U66 Blackbird 2108-413

ADJ. IMF	Ratio
3.52	103
Adj. RE	Ratio
12.2	86
Adj. Rib Fat	Dam's WR
.45	1-97

CED	BEPD	WEPD	YEPD	SC	MILK	CW	Marb	RE		
+12	-1.0	+64	+111	+.59	+24	+42	+.68	+.30		
BW	205 WT	Ratio	365 WT	Ratio	ADG	RATIO	\$M	\$W	\$B	\$C
69	673	97	1166	99	3.33	104	+71	+68	+122	+229

- This bull is moderate framed, clean fronted and good outlined. A sure fire heifer bull that will add foot quality, pounds and growth to his calves. He excels in maternal strength as well as growth and performance.
- Suitable for heifers and cows.

## 27 WL Accomplishment 0145

Birth Date: 03-29-2020

Bull 19834208

Tattoo: 0145

\*Poss Achievement  
\*Sitz Accomplishment 720F  
19078208 Sitz Barabamere Nell 166D

ANGUSGS  
Powered by NECEV

+SAV Bandalier 1916

+WL 1916 Blackbird 925-094

16715727 Molitor 043 Blkdb A 930-925

Poss Lasting Impact 3118  
\*Poss Erica 327

#\*SAV Resource 1441

Sitz Barabamere Nell 14Y

SVF Bandalier

+Boyd Forever Lady 7122

#+Sitz Traveler 043

Molitor Clara Blackbird 8239

ADJ. IMF	Ratio
4.07	119
Adj. RE	Ratio
13.5	95
Adj. Rib Fat	Dam's WR
.51	9-100

CED	BEPD	WEPD	YEPD	SC	MILK	CW	Marb	RE		
+6	+.4	+48	+85	+.41	+22	+38	+.79	+.30		
BW	205 WT	Ratio	365 WT	Ratio	ADG	RATIO	\$M	\$W	\$B	\$C
85	713	103	1172	99	3.24	101	+57	+45	+124	+218

- A moderate framed, performance packed Accomplishment son that is backed by a time-tested Bandalier 1916 dam that never misses. His high marbling will inject lots of positive carcass traits into future calves.
- Suitable for cows.



# WENDEL LIVESTOCK ANGUS BULLS



**WL Legendary 003W - Lot 28**



**WL Accomplishment 019 - Lot 30**

## 28 WL Legendary 003W

Birth Date: 02-24-2020

Bull \*19832304

Tattoo: 003W

#+\*Quaker Hill Rampage 0A36 #MCC Daybreak  
 +\*Connealy Legendary 644L +\*QHF Blackcap 6E2 of 4V16 4355  
 18534952 \*Jazzed of Conanga 4660 #Morgans Direction 111 9901  
 Jaze of Conanga 234

ANGUSGS

\*S Powerpoint WS 5503

Tehama Revere

\*WL 5503 Zara 630-823

\*S Queen Essa 248

19384692 WL 3436 Zara 341-630

#+\*SAV Recharge 3436

WL 0100 Zara 849-341

ADJ. IMF	Ratio
3.09	109
Adj. RE	Ratio
13.5	99
Adj. Rib Fat	Dam's WR
.17	1-101

CED	BEPD	WEPD	YEPD	SC	MILK	CW	Marb	RE		
+7	+1.4	+78	+131	+80	+15	+68	+73	+1.08		
BW	205 WT	Ratio	365 WT	Ratio	ADG	RATIO	\$M	\$W	\$B	\$C
70	721	101	1230	102	3.33	100	+46	+67	+171	+268

- We don't have many Legendary bulls but the ones we have are good. He is a high growth bull that travels well with a good long slide. His carcass traits and growth make him a top \$Beef bull.
- Suitable for large framed heifers and cows.

## 30 WL Accomplishment 019

Birth Date: 02-24-2020

Bull 19834182

Tattoo: 019

\*Poss Achievement  
 \*Sitz Accomplishment 720F  
 19078208 Sitz Barbamere Nell 166D

ANGUSGS

\*S Chisum 255

WL 255 Blackbird 413-898

19744688 WL 2U66 Blackbird 2108-413

Poss Lasting Impact 3118

\*Poss Erica 327

#+\*SAV Resource 1441

Sitz Barbamere Nell 14Y

#S Chisum 6175

#S Blossom 0278

#+\*Summitcrest Focus 2U66

#WL 7374 Blackbird 740-2108

ADJ. IMF	Ratio
5.18	152
Adj. RE	Ratio
14.8	104
Adj. Rib Fat	Dam's WR
.45	1-103

CED	BEPD	WEPD	YEPD	SC	MILK	CW	Marb	RE		
+0	+3.0	+71	+114	+1.40	+21	+48	+.73	+.80		
BW	205 WT	Ratio	365 WT	Ratio	ADG	RATIO	\$M	\$W	\$B	\$C
80	711	103	1186	101	3.06	95	+76	+67	+147	+267

- A moderate bull that packs muscle, volume and shape into a complete package. He is high indexing in every \$Value in the top 30% of the breed. His 255 dam, 898, is a well-mannered, good structured and nice uddered cow.
- Suitable for cows.

## 29 WL Accomplishment 013

Birth Date: 02-22-2020

Bull \*19834198

Tattoo: 013

\*Poss Achievement  
 \*Sitz Accomplishment 720F  
 19078208 Sitz Barbamere Nell 166D

ANGUSGS

\*Connealy Comrade 1385

WL 1385 Rosebud 404-617

18694654 #WL 213 Rosebud 267-404

Poss Lasting Impact 3118

\*Poss Erica 327

#+\*SAV Resource 1441

Sitz Barbamere Nell 14Y

#\*Connealy Consensus 7229

Happy Gee of Conanga 919

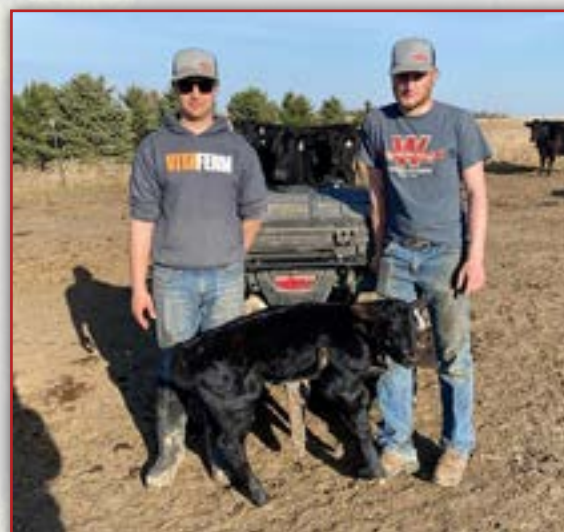
Mc Cumber Fortunate 213

+\*WL FP Rosebud 529-267

ADJ. IMF	Ratio
4.76	140
Adj. RE	Ratio
13.8	97
Adj. Rib Fat	Dam's WR
.46	3-104

CED	BEPD	WEPD	YEPD	SC	MILK	CW	Marb	RE		
+14	-1.7	+59	+116	+1.40	+32	+38	+.71	+.79		
BW	205 WT	Ratio	365 WT	Ratio	ADG	RATIO	\$M	\$W	\$B	\$C
83	727	105	1236	105	3.32	104	+57	+70	+135	+232

- A wide constructed, heavy muscled bull that comes in a moderate package. He is long sided and clean through his front 1/3. A calving ease specialist that will add positive carcass traits. He is backed by the Toby Rosebud cow family that delivers consistent performance.
- Suitable for heifers and cows.



Reed and Ryder processing calves. All calves are digitally weighed, given 7-way, Enforce 3, VitaCharge, tagged and DNA sampled.



# WENDEL LIVESTOCK ANGUS BULLS



**WL Chisum 097 - Lot 31**

## 33 WL Arsenal 084

Birth Date: 03-14-2020

Bull \*19832307

Tattoo: 084

#\*Connealy Arsenal 2174

#Connealy Packer 547

**Tokach Arsenal F064**

#Black Rice of Conanga 9529

19270721 Tokach Lady Rito 2013

#\*Hoover Dam

ANGUSGS

Tokach Lady Rito 0034

\*S Powerpoint WS 5503

Tehama Revere

**WL 5503 Eleanor 934-899**

\*S Queen Essa 248

19384703 WL 0035 Eleanor 582-934

#\*SAV Final Answer 0035

WL 2385 Eleanor 751-582

ADJ. IMF	Ratio
2.52	74
Adj. RE	Ratio
15.7	111
Adj. Rib Fat	Dam's WR
.29	1-111

CED	BEPD	WEPD	YEPD	SC	MILK	CW	Marb	RE		
+12	+6	+77	+133	+1.41	+24	+62	-.01	+96		
BW	205 WT	Ratio	365 WT	Ratio	ADG	RATIO	\$M	\$W	\$B	\$C
80	767	111	1276	108	3.33	104	+68	+79	+132	+239

- A very nicely balanced profile bull that is free and easy striding on the move. This big spread bull will work well if you are looking for growth, calving ease and good structure.
- Suitable for heifers and cows.

## 31 WL Chisum 097

Birth Date: 03-19-2020

Bull 19833170

Tattoo: 097

#\*S Chisum 6175

S Alliance 3313

17298481 #S Blossom 0278

#S Gloria 464

ANGUSGS

#\*Shipwheel Chinook

#S Blossom 8378

\*Mohnen Objective 1220

#\*SS Objective T510 OT26

**WL 1220 Pride Lucy 1101-4130**

+Mohnen Erianna 2576

17940881 +WL HD Pride Lucy 218-1101

#\*Hoover Dam

+Pride Lucy Gal 218

ADJ. IMF	Ratio
2.69	79
Adj. RE	Ratio
15.5	109
Adj. Rib Fat	Dam's WR
.45	4-106

CED	BEPD	WEPD	YEPD	SC	MILK	CW	Marb	RE		
+13	-2.3	+56	+92	+86	+29	+33	+31	+68		
BW	205 WT	Ratio	365 WT	Ratio	ADG	RATIO	\$M	\$W	\$B	\$C
70	695	101	1130	96	2.69	84	+82	+72	+101	+213

- A moderate framed 255 son that is very expressive in his muscle pattern. Big topped, deep quartered and bodied bull combined with calving ease will work well for many. His Objective 1220 dam, 4130, has an impressive 4@106 NR and comes from the powerful Pride Lucy cow family back to donor great granddam 218.
- Suitable for heifers and cows.

## 32 WL Chisum 030

Birth Date: 02-27-2020

Bull \*19833154

Tattoo: 030

#\*S Chisum 6175

S Alliance 3313

**\*S Chisum 255**

#S Gloria 464

17298481 #S Blossom 0278

#\*Shipwheel Chinook

ANGUSGS

#S Blossom 8378

\*S Powerpoint WS 5503

Tehama Revere

**\*WL 5503 Queen 6165-802**

\*S Queen Essa 248

19384689 #WL 127 Queen 823-6165

\*WL War Party 127

WL 0035 Queen 550-823

ADJ. IMF	Ratio
2.45	72
Adj. RE	Ratio
13.7	96
Adj. Rib Fat	Dam's WR
.43	1-109

CED	BEPD	WEPD	YEPD	SC	MILK	CW	Marb	RE		
+3	+3.0	+70	+109	+1.50	+25	+42	+05	+66		
BW	205 WT	Ratio	365 WT	Ratio	ADG	RATIO	\$M	\$W	\$B	\$C
86	751	109	1161	99	2.59	81	+72	+73	+96	+197

- A larger framed 255 son that will add extra size and pounds. One of the largest outlined bulls in the sale back by maternal strength on both side of his pedigree, Chisum 255 and Powerpoint.
- Suitable for cows.

## 35 WL Accomplishment 002W

Birth Date: 02-16-2020

Bull \*19834189

Tattoo: 002W

\*Poss Achievement

Poss Lasting Impact 3118

**\*Sitz Accomplishment 720F**

\*Poss Erica 327

19078208 Sitz Barbamere Nell 166D

#\*SAV Resource 1441

ANGUSGS

Sitz Barbamere Nell 14Y

#\*Connealy Capitalist 028

Connealy Tobin

**+\*WL 028 Jilt1665-808W**

Becka Gala of Conanga 8281

19383721 +\*Mohnen Jilt 1665

#\*SAV Final Answer 0035

Prides Pita of Conanga 8821

#\*Wulffs Ext 6106

#Mohnen Jilt 910

ADJ. IMF	Ratio
3.05	107
Adj. RE	Ratio
14.1	103
Adj. Rib Fat	Dam's WR
.32	1-92

CED	BEPD	WEPD	YEPD	SC	MILK	CW	Marb	RE		
+13	-5	+71	+122	+1.63	+32	+49	+62	+21		
BW	205 WT	Ratio	365 WT	Ratio	ADG	RATIO	\$M	\$W	\$B	\$C
60	657	92	1156	95	3.80	114	+62	+82	+125	+224

- A low birth Accomplishment son that is nicely balanced in his structure. Like most Accomplishment sons, he is wide hiped, deep, thick quartered and smooth fronted. Another meat packed, heavy muscled bull that offers calving ease without sacrificing pounds or muscle shape. His dam, 808W, is a Capitalist 028 X our donor Jilt 1665 dam that proved to be a very good mating.
- Suitable for heifers and cows.



# WENDEL LIVESTOCK ANGUS BULLS



**WL Excitement 033W - Lot 36**

## 38 WL Excitement 064

Birth Date: 03-12-2020

Bull \*19832310

Tattoo: 064

#\*Basin Excitement  
\*TLC Excitement 245  
18440207 +\*TLC Blackcap 243

ANGUSGS

+Basin Expedition R156  
Basin Lady S532 AK  
#\*SAV Angus Valley 1867  
Fairdales Blackcap 21

\*S Powerpoint WS 5503

WL 5503 Eileen May 319-8113

19384700 WL 7229 Eileen May 801-319

Tehama Revere  
\*S Queen Essa 248  
#\*Connealy Consensus 7229  
WL 0035 Dividend 641-801

ADJ. IMF	Ratio
3.76	110
Adj. RE	Ratio
14.7	104
Adj. Rib Fat	Dam's WR
.38	1-102

CED	BEPD	WEPD	YEPD	SC	MILK	CW	Marb	RE		
+15	-2.5	+56	+95	+62	+18	+30	+60	+40		
BW	205 WT	Ratio	365 WT	Ratio	ADG	RATIO	\$M	\$W	\$B	\$C
62	706	102	1165	99	2.78	87	+67	+58	+108	+207

- A complete made 245 son that is good muscled and smooth made from front to rear.
- His Powerpoint dam, 8113, fits the mold of a great producing female. He is double-bred calving ease and has one of the highest CEDs in the sale offering.
- Suitable for heifers and cows.

## 36 WL Excitement 033W

Birth Date: 04-04-2020

Bull \*19832252

Tattoo: 033W

#\*Basin Excitement  
\*TLC Excitement 245  
18440207 +\*TLC Blackcap 243

ANGUSGS

#\*JMB Traction 292

+\*WL 292 Lady 0100-821W

19383748 +\*RB Lady Standard 305-0100

+Basin Expedition R156  
Basin Lady S532 AK  
#\*SAV Angus Valley 1867  
Fairdales Blackcap 21

\*Sitz Top Game 561X

\*JMB Emulota 013

\*LCC New Standard

+\*BA Lady 6807 305

ADJ. IMF	Ratio
3.07	108
Adj. RE	Ratio
12.8	93
Adj. Rib Fat	Dam's WR
.26	1-119

CED	BEPD	WEPD	YEPD	SC	MILK	CW	Marb	RE		
+4	+2.3	+74	+138	+1.57	+40	+56	+26	+61		
BW	205 WT	Ratio	365 WT	Ratio	ADG	RATIO	\$M	\$W	\$B	\$C
86	844	119	1233	102	2.41	72	+64	+86	+123	+224

- A gentle mannered 245 son out of a productive Traction daughter from the Lady cow family that weaned off this bull at the top of his contemporary group. This high growth, powerful performing bull won't quit licking my pants while I try to write this note. He is a nicely balanced, structured bull with plenty of mass and dimension to add value to your herd.
- Suitable for cows.



**WL Capitalist 0140 - Lot 39**

## 37 WL Cowboy Up 0164

Birth Date: 04-05-2020

Bull 19832286

Tattoo: 0164

\*HA Cowboy Up 5405  
PF Cowboy Up 804  
19241241 PF Emblynette 214

ANGUSGS

#\*Connealy Mentor 7374

+\*WL 7374 Queen 512-482

17942042 #WL 112 Queen 319-512

\*HA Outside 3008  
#\*HA Blackcap Lady 1602  
#MCATL Pure Product 903-55  
#SAV Emblynette 8170

#GAR Retail Product

#Executa of Conanga 939

#\*Rito 112 of 2536 Rito 616

WL 117 Queen 141-319

ADJ. IMF	Ratio
3.26	96
Adj. RE	Ratio
13.7	96
Adj. Rib Fat	Dam's WR
.39	4-103

CED	BEPD	WEPD	YEPD	SC	MILK	CW	Marb	RE		
-2	+4.6	+87	+143	+1.23	+19	+59	+47	+47		
BW	205 WT	Ratio	365 WT	Ratio	ADG	RATIO	\$M	\$W	\$B	\$C
101	741	107	1299	110	3.52	110	+28	+69	+135	+203

- A larger outlined Cowboy Up 804 son that offers superior growth and performance. Muscle packed and big middled makes this bull a tremendous herd improver by adding phenotype quality and pounds to his offspring. Look up 0164 on sale day if you are looking to add pounds and value to a set of calves.
- Suitable for cows.

## 39 WL Capitalist 0140

Birth Date: 03-27-2020

Bull \*19840368

Tattoo: 0140

#\*Connealy Capitalist 028  
+\*LD Capitalist 316  
17666102 LD Dixie Erica 2053

ANGUSGS

#\*SAV Final Answer 0035

MCATL Forever Lady 1429-138

16483505 ALC Forever Lady R025

#\*SAV Final Answer 0035  
Prides Pita of Conanga 8821  
#CA Future Direction 5321  
LD Dixie Erica Oar 0853

#Sitz Traveler 8180

SAV Emulous 8145

#+Leachman Right Time

ALC Forever Lady K14P

ADJ. IMF	Ratio
3.06	100
Adj. RE	Ratio
14.9	104
Adj. Rib Fat	Dam's WR
.35	4-108

CED	BEPD	WEPD	YEPD	SC	MILK	CW	Marb	RE		
+9	+1.8	+80	+143	+77	+20	+60	+53	+66		
BW	205 WT	Ratio	365 WT	Ratio	ADG	RATIO	\$M	\$W	\$B	\$C
97	718	100	1251	100	3.52	110	+61	+73	+155	+262

- We sorted these bulls into two pens back in November. This is the beginning of pen 2. Many of these bulls could find their way to the front end of the sale. The lead off bull is a Capitalist 316 son out of the dam of Aviator. He has lots of length and extension without sacrificing muscle expression. His birth to yearling spread makes him a standout along with his positive carcass traits.
- Suitable for heifers and cows.



# WENDEL LIVESTOCK ANGUS BULLS



**WL FP Rosebud 529-2107 - Dam of Lot 40.**

WL FP Rosebud 529-2107 entered our flush program in our efforts to replicate her past successes. Her Pathfinder Dam, 529, is a major staple in our genetic pool with lots of performance, fertility, rib shape, tidy udder, muscle expression and high marbling traits. She scanned 20@104 for IMF. 2107 is the best of the Final Product flush that yielded 10 daughters. She is the dam of 490, who produced Comrade 610 and is heavily influenced in this sale. Dam of Lot 40.



**WL Chisum 0101 - Lot 40**

## 41 WL Blueprint 092

Birth Date: 03-18-2020

Bull 19833338

Tattoo: 092

\*Connealy Confidence Plus

#\*Connealy Confidence 0100

\*Woodhill Blueprint

Elbanna of Conanga 1209

18876777 \*Woodhill Evergreen Z291-B233

\*Tehama Sierra Cut Z118

ANGUSGS

+\*Woodhill Evergreen U6-Z291

#\*Connealy Final Product

\*Connealy Product 568

WL FP Eleanor 934-527

#Ebonista of Conanga 471

18269329 WL 0035 Eleanor 582-934

#\*SAV Final Answer 0035

WL 2385 Eleanor 751-582

ADJ. IMF	Ratio
3.17	93
Adj. RE	Ratio
15.2	107
Adj. Rib Fat	Dam's WR
.52	4-104

CED	BEPD	WEPD	YEPD	SC	MILK	CW	Marb	RE		
+5	+1.5	+84	+144	+51	+20	+66	+57	+92		
BW	205 WT	Ratio	365 WT	Ratio	ADG	RATIO	\$M	\$W	\$B	\$C
82	785	114	1310	111	3.52	110	+55	+80	+161	+264

- This big growth bull redefines deep ribbed and big middled. He is wide topped and thick in his rear quarter. The first Blueprint bull in the sale. Blueprint is a moderate, stout sire that stamps his calves with lots of natural thickness. 092's impressive WW and YW EPDs will grow, and he will inject positive carcass traits into his offspring.
- Suitable for cows.



**WL Accomplishment 067 - Lot 42**

## 40 WL Chisum 0101

Birth Date: 03-20-2020

Bull +\*19833174

Tattoo: 0101

#\*S Chisum 6175

S Alliance 3313

\*S Chisum 255

17298481 #S Blossom 0278

#S Gloria 464

#Shipwheel Chinook

#S Blossom 8378

ANGUSGS

#\*Connealy Final Product

\*Connealy Product 568

+\*WL FP Rosebud 529-2107

#Ebonista of Conanga 471

17367781 #WL GM Toby Rosebud L2-529

#\*GAR Grid Maker

Ahlgrens Toby Rosebud 4335

CED	BEPD	WEPD	YEPD	SC	MILK	CW	Marb	RE		
+6	+9	+51	+80	+69	+18	+11	+42	+18		
BW	205 WT	Ratio	365 WT	Ratio	ADG	RATIO	\$M	\$W	\$B	\$C
104	788	108	1231	105	3.15	113	+69	+53	+81	+174

- A very special ET bull out of the constant delivering Chisum 255. An easy keeping, deep middled, level patterned bull that carries himself with ease. He is out of 2107, a Final Product donor dam, that has had a huge influence in our program and her pedigree extends back to our base Toby Rosebud donor 529.
- Suitable for cows.

## 42 WL Accomplishment 067

Birth Date: 03-12-2020

Bull 19834210

Tattoo: 067

\*Poss Achievement

Poss Lasting Impact 3118

\*Sitz Accomplishment 720F

19078208 Sitz Barbaramere Nell 166D

\*Poss Erica 327

#\*SAV Resource 1441

ANGUSGS

#\*Leachman Right Time

Sitz Barbaramere Nell 14Y

#+WL RT Forever Lady 132K-999

16443024 +SVF Forever Lady 132K

#\*N Bar Emulation EXT

Leachman Erica 0025

+SVF Gdar 216 LTD

+SVF Forever Lady 1121

ADJ. IMF	Ratio
4.12	120
Adj. RE	Ratio
14.8	101
Adj. Rib Fat	Dam's WR
.46	10-103

CED	BEPD	WEPD	YEPD	SC	MILK	CW	Marb	RE		
+2	+2.5	+72	+128	+1.25	+18	+48	+62	+59		
BW	205 WT	Ratio	365 WT	Ratio	ADG	RATIO	\$M	\$W	\$B	\$C
89	817	111	1310	106	3.70	104	+63	+60	+137	+241

- An Accomplishment son out of a Right Time dam that has longevity of 10@103 nursing ratio. This mating produced a super thick muscled, high growth bull that has lots of positive carcass traits. A high ratioing bull in a large contemporary group. He will add thickness and pounds to his offspring.
- Suitable for cows.



# WENDEL LIVESTOCK ANGUS BULLS



**WL Tribute 090 - Lot 43**



**WL 213 Rosebud 2107-490 - Dam of Lot 45.**

A true effective mating of herd sire McCumber Fortunate 213 and our donor, WL FP Rosebud 529-2107, who is a flush daughter to our cornerstone donor WL GM Toby Rosebud L2-529 that had her 10th natural calf this spring and has 50 progeny in AHIR. 490 is the dam to WL Comrade 610, the high selling bull in our 2017 sale and sire to many sale lots. She is a prolific producer with BW ratio 4/100 and NR 4/111. She is the dam of Lot 45.

## 43 WL Tribute 090

Birth Date: 03-17-2020

Bull \*19848399

Tattoo: 090

+Mc Cumber Tremendous 2008

#+OCC Tremendous 619T

\*Mc Cumber Tribute 702

#+Miss Wix 2022 HC Mc Cumber

18844381 #\*Lassie 113 of Mc Cumber

#\*OCC Missing Link 830M

#Lassie 935 OF Mc Cumber

ANGUSGS

\*WL War Party 127

#+\*Werner War Party 2417

#WL 127 Queen 823-6165

WL 0035 Fancy Beauty 435-953

18694687 WL 0035 Queen 550-823

#\*SAV Final Answer 0035

#Erdmann EXT5 Queen 550

CED	BEPD	WEPD	YEPD	SC	MILK	CW	Marb	RE		
+8	+1.4	+59	+107	+45	+27	+40	+41	+34		
BW	205 WT	Ratio	365 WT	Ratio	ADG	RATIO	\$M	\$W	\$B	\$C
87	735	106	1236	105	3.43	107	+63	+65	+114	+211

- A moderate framed Tribute son who is wide topped and deep and bold in his rib cage. He tracks wide and straight and being out of Tribute he will be low input without sacrificing muscle. Tribute calves are full of vigor when born. He is backed by a young Pathfinder Cow that ratios 3@106 and has a bright future.

- Suitable for cows.



**WL Chisum 0157 - Lot 45**

## 44 WL Chisum 073

Birth Date: 03-12-2020

Bull \*19833166

Tattoo: 073

#\*S Chisum 6175

S Alliance 3313

\*S Chisum 255

#S Gloria 464

17298481 #S Blossom 0278

#Shipwheel Chinook

#S Blossom 8378

ANGUSGS

WL Ten X 356

#\*AAR Ten X 7008 SA

WL 356 Princesses 418-6172

+WL 307R Zara 577-192

18694716 WL 0100 Princesses 0128-418

#\*Connealy Confidence 0100

#WL 802 Princesses 873-0128

CED	BEPD	WEPD	YEPD	SC	MILK	CW	Marb	RE		
+12	-1.0	+62	+105	+64	+15	+39	+01	+74		
BW	205 WT	Ratio	365 WT	Ratio	ADG	RATIO	\$M	\$W	\$B	\$C
72	640	93	1141	97	3.70	115	+52	+58	+105	+188

- A very long sided, bold ribbed bull that is out of Chisum 255. He should be a sure fire heifer bull that is very balanced in his EPDs that has extra performance.
- Suitable for heifers and cows.

## 45 WL Chisum 0157

Birth Date: 04-01-2020

Bull \*19832292

Tattoo: 0157

#\*S Chisum 6175

S Alliance 3313

\*S Chisum 255

#S Gloria 464

17298481 #S Blossom 0278

#Shipwheel Chinook

#S Blossom 8378

ANGUSGS

Mc Cumber Fortunate 213

#\*Sinclair Fortunate Son

\*WL 213 Rosebud 2107-490

#+Miss Wix 5139 of Mc Cumber

17940873 +\*WL FP Rosebud 529-2107

#\*Connealy Final Product

#WL GM Toby Rosebud L2-529

CED	BEPD	WEPD	YEPD	SC	MILK	CW	Marb	RE		
+2	+2.4	+69	+112	+45	+33	+52	+21	+76		
BW	205 WT	Ratio	365 WT	Ratio	ADG	RATIO	\$M	\$W	\$B	\$C
93	701	101	1194	101	3.52	110	+71	+83	+122	+229

- A long sided 255 son that has an attractive side profile. He is backed by the dam of our high selling Comrade 610 herd sire 490. Her production records are impressive with NR of 5@109 and is very angular in her design. This bull is backed with maternal power on both sides of his pedigree and will make great replacements.
- Suitable for cows.



# WENDEL LIVESTOCK ANGUS BULLS



**WL Tribute 045 - Lot 46**



**WL Cowboy Up 0133 - Lot 48**

## 46 WL Tribute 045

Birth Date: 03-04-2020

Bull \*19848398

Tattoo: 045

+Mc Cumber Tremendous 2008 #+OCC Tremendous 619T  
 \*Mc Cumber Tribute 702 #+Miss Wix 2022 HC Mc Cumber  
 18844381 #\*Lassie 113 of Mc Cumber #\*OCC Missing Link 830M  
 #Lassie 935 OF Mc Cumber

ANGUSGS

\*TLC Excitement 245

#\*Basin Excitement

WL 245 Rosebud 5174-702

+\*TLC Blackcap 243

18980147 WL 2439 Rosebud 2107-5174

S Packer 2439

+\*WL FP Rosebud 529-2107

CED	BEPD	WEPD	YEPD	SC	MILK	CW	Marb	RE		
+8	+0	+52	+99	+1.04	+26	+33	+19	+32		
BW	205 WT	Ratio	365 WT	Ratio	ADG	RATIO	\$M	\$W	\$B	\$C
87	671	97	1204	102	3.98	124	+43	+56	+95	+166

- This very docile Tribute son has a very positive phenotype in his makeup. He is packed with muscle and is big topped, big middled, and clean sheathed. A pen favorite for disposition and is backed by a very productive, fancy, 245 daughter.
- Suitable for larger framed heifers and cows.

## 48 WL Cowboy Up 0133

Birth Date: 03-25-2020

Bull 19832297

Tattoo: 0133

\*HA Cowboy Up 5405

\*HA Outside 3008

PF Cowboy Up 804

#\*HA Blackcap Lady 1602

19241241 PF Emblynette 214

#MCATL Pure Product 903-55

ANGUSGS

#SAV Emblynette 8170

#\*S Chisum 6175

S Alliance 3313

WL 6175 Queen 823-408

#S Gloria 464

17942024 WL 0035 Queen 550-823

#\*SAV Final Answer 0035

#Erdmann EXTS Queen 550

CED	BEPD	WEPD	YEPD	SC	MILK	CW	Marb	RE		
+4	+2.2	+78	+133	+1.91	+18	+46	+38	+17		
BW	205 WT	Ratio	365 WT	Ratio	ADG	RATIO	\$M	\$W	\$B	\$C
91	700	101	1201	102	3.15	98	+59	+71	+112	+204

- A powerful, thick bull that packs lots of performance and growth into a moderate package. A looser skinned, long spined, high EPD scrotal bull.
- Suitable for cows.

## 47 WL Patriarch 047

Birth Date: 03-04-2020

Bull 19834177

Tattoo: 047

\*SS Niagara Z29

#\*Hoover Dam

\*Tehama Patriarch F028

Jet SS X144

18981191 Tehama Elite Blackbird D826

#Connealy Thunder

Tehama Elite Blackbird Z630

ANGUSGS

#\*Connealy Final Product

\*Connealy Product 568

WL FP Ms Blackcap 815-538

#Ebonista of Conanga 471

18269352 WL IF Ms Blackcap 645-815

#\*Mytty In Focus

WL G13 Ms Blackcap 208-645

CED	BEPD	WEPD	YEPD	SC	MILK	CW	Marb	RE		
+8	-.1	+55	+106	+.73	+35	+40	+1.06	+.67		
BW	205 WT	Ratio	365 WT	Ratio	ADG	RATIO	\$M	\$W	\$B	\$C
83	679	93	1172	95	3.80	106	+70	+68	+156	+272

- A large outlined bull that is high growth and long sided. His EPD profile has lots to write about as he is a heifer bull that is tops for Marb and RE EPDs as well as foot Claw and Angle.
- Suitable for heifers and cows.



**Dennis and Marsha with grandsons, Ryder, Reed, Bret and Brock all part of LaMoure Lobos football team.**



# WENDEL LIVESTOCK ANGUS BULLS



**WL Excitement 049 - Lot 49**

## 49 WL Excitement 049 [DDP]

Birth Date: 03-07-2020

Bull 19832319

Tattoo: 049

#\*Basin Excitement

+Basin Expedition R156

\*TLC Excitement 245

Basin Lady S532 AK

18440207 +\*TLC Blackcap 243

#+\*SAV Angus Valley 1867

ANGUSGS

S Expedition 788

Fairdales Blackcap 21

WL 788 Ms Blackcap 661-1130

#R&S Expedition 1404

17026376 WL 112 Ms Blackcap 3K19-661

#S Rosemary 247

#+\*Rito 112 of 2536 Rito 616

LBK Ms Blackcap 3K19

CED	BEPD	WEPD	YEPD	SC	MILK	CW	Marb	RE		
+12	-6	+54	+92	+1.04	+26	+37	+.61	+.25		
BW	205 WT	Ratio	365 WT	Ratio	ADG	RATIO	\$M	\$W	\$B	\$C
82	677	98	1144	97	2.69	84	+82	+63	+124	+243

- A larger outlined Excitement 245 bull that has lots of length and is smooth shouldered, clean fronted, deep sided and big quartered. He is out of a very attractive Expedition dam that doesn't show her age as she has a great udder, disposition and still breeds AI. A calving-ease deluxe that has lots of growth.
- Suitable for heifers and cows.

## 51 WL Accomplishment 091

Birth Date: 03-20-2020

Bull 19834202

Tattoo: 091

\*Poss Achievement

Poss Lasting Impact 3118

\*Sitz Accomplishment 720F

\*Poss Erica 327

19078208 Sitz Barbaramere Nell 166D

#+\*SAV Resource 1441

ANGUSGS

Sitz Barbaramere Nell 14Y

#\*Connealy Confidence 0100

Connealy Tobin

#+ WL 0100 Toby Rosebud 529-451

Becka Gala of Conanga 8281

17942149 #WL GM Toby Rosebud L2-529

#+\*GAR Grid Maker

Ahlgrens Toby Rosebud 4335

ADJ. IMF	Ratio
2.84	83
Adj. RE	Ratio
15.0	106
Adj. Rib Fat	Dam's WR
.37	5-101

CED	BEPD	WEPD	YEPD	SC	MILK	CW	Marb	RE		
+13	+0	+62	+107	+.73	+13	+45	+.42	+.79		
BW	205 WT	Ratio	365 WT	Ratio	ADG	RATIO	\$M	\$W	\$B	\$C
81	648	94	1133	96	3.52	110	+59	+50	+134	+233

- This very attractive Accomplishment son offers lots of muscle and natural width. His dam, 451, is a Confidence 0100 X 529 donor Toby Rosebud and is 5@107 NR. She is very angular made with a good udder. 091's maternal brother is a herd sire at MAC Ranch in Bismarck, ND.
- Suitable for heifers and cows.



**WL Tribute 0114 - Lot 52**

## 50 WL Patriarch 0109

Birth Date: 03-22-2020

Bull 19834178

Tattoo: 0109

\*SS Niagara Z29

#\*Hoover Dam

\*Tehama Patriarch F028

Jet SS X144

18981191 Tehama Elite Blackbird D826

#Connealy Thunder

ANGUSGS

#\*Connealy Final Product

Tehama Elite Blackbird Z630

+WL FP Rosebud 529-265

\*Connealy Product 568

17367779 #WL GM Toby Rosebud L2-529

#Ebonista of Conanga 471

#+\*GAR Grid Maker

Ahlgrens Toby Rosebud 4335

CED	BEPD	WEPD	YEPD	SC	MILK	CW	Marb	RE		
+6	+1.4	+68	+125	+.77	+17	+53	+.67	+.60		
BW	205 WT	Ratio	365 WT	Ratio	ADG	RATIO	\$M	\$W	\$B	\$C
87	739	107	1256	107	3.80	118	+60	+59	+154	+260

- This Patriarch son is a high performance, large outlined, high carcass trait bull that is backed by a flush sister to our great 2107 donor. His dam, 265, is a moderate framed, easy fleshing cow that breeds up year after year. He is backed by maternal power on both sides and has positive carcass traits.
- Suitable for cows.

## 52 WL Tribute 0114

Birth Date: 03-22-2020

Bull 19848406

Tattoo: 0114

+Mc Cumber Tremendous 2008

#+OCC Tremendous 619T

\*Mc Cumber Tribute 702

#+Miss Wix 2022 HC Mc Cumber

18844381 #\*Lassie 113 of Mc Cumber

#\*OCC Missing Link 830M

ANGUSGS

#Lassie 935 of Mc Cumber

\*Mohnen Objective 1220

#\*SS Objective T510 0T26

WL 1220 FancyBeauty7106-4120

+Mohnen Erianna 2576

17940878 WL 420 FancyBeauty 5103-7106

WL E161 Precision 420

WL 112 Fancy Beauty 237-5103

ADJ. IMF	Ratio
2.55	74
Adj. RE	Ratio
14.0	96
Adj. Rib Fat	Dam's WR
.40	5-101

CED	BEPD	WEPD	YEPD	SC	MILK	CW	Marb	RE		
+5	+2.3	+51	+101	+1.29	+35	+41	+21	+61		
BW	205 WT	Ratio	365 WT	Ratio	ADG	RATIO	\$M	\$W	\$B	\$C
87	727	99	1236	100	3.43	96	+44	+59	+116	+194

- A very long and extended Tribute son that has lots of center body and base width. A larger outlined bull that is gentle in the pen. The Tribute sons will be low input, easy keeping cattle. The calves get up and nurse at birth.
- Suitable for cows.



# WENDEL LIVESTOCK ANGUS BULLS

## 53 WL Blueprint 060

Birth Date: 03-09-2020

Bull 19833343

Tattoo: 060

\*Woodhill Blueprint  
18876777 \*Woodhill Evergreen Z291-B233  
ANGUSGS  
DR Bismarck 802  
WL 802 Miss Queedy 847-0119  
16711942 WL GI Miss Queedy 258-847

#\*Connealy Confidence Plus  
#\*Connealy Confidence 0100  
Elbanna of Conanga 1209  
#Tehama Sierra Cut Z118  
+\*Woodhill Evergreen U6-Z291

#+SAV Bismarck 5682  
DR Erica 657  
#TC Gridiron 258  
#LBK Miss Queedy 2K58

ADJ. IMF	Ratio
2.03	59
Adj. RE	Ratio
16.5	113
Adj. Rib Fat	Dam's WR
.29	7-101

CED	BEPD	WEPD	YEPD	SC	MILK	CW	Marb	RE		
+6	+2.7	+78	+142	+1.39	+26	+68	+10	+1.11		
BW	205 WT	Ratio	365 WT	Ratio	ADG	RATIO	\$M	\$W	\$B	\$C
91	817	111	1318	107	3.33	93	+65	+75	+146	+254

- This Blueprint son is one of the largest framed bulls in the sale that ratioed 111% at weaning. His time-tested, fancy, Bismarck dam, 0119, is 7@101 in production. He has added growth and frame that he will pass on to his calves.
- Suitable for cows.



WL Chisum 0102 - Lot 54

## 55 WL Excitement 027W

Birth Date: 03-24-2020

Bull 19832254

Tattoo: 027W

\*TLC Excitement 245  
WL Excitement 701  
18953004 WL 392 Zara 320-580

ANGUSGS  
WL Bismarck 103

WL 103 Lady 0100-4140  
17940898 +\*RB Lady Standard 305-0100

#\*Basin Excitement  
+\*TLC Blackcap 243  
\*WL Confidence 392  
WL 071 Zara 850-320  
#+SAV Bismarck 5682  
#WL 4200 Sky Polly 309-960  
#\*LCC New Standard  
+\*BA Lady 6807 305

ADJ. IMF	Ratio
2.28	80
Adj. RE	Ratio
13.8	101
Adj. Rib Fat	Dam's WR
.40	4-94

CED	BEPD	WEPD	YEPD	SC	MILK	CW	Marb	RE		
+11	-1.0	+53	+103	+0.2	+38	+35	+22	+61		
BW	205 WT	Ratio	365 WT	Ratio	ADG	RATIO	\$M	\$W	\$B	\$C
82	651	91	1187	98	3.80	114	+51	+69	+117	+203

- This Excitement 701 son is extended through his front end, wide topped and tracks well on the move. His dam is massive and comes from the Lady family that goes back to RB Lady Standard 305-0100, a full sister to RB Active Duty.
- Suitable for heifers and cows.



WL Payweight 0176 - Lot 56

## 54 WL Chisum 0102

Birth Date: 03-20-2020

Bull +\*19838575

Tattoo: 0102

\*S Chisum 255  
17298481 #S Blossom 0278  
ANGUSGS

\*Connealy Final Product  
+\*WL FP Rosebud 529-2107  
17367781 #WL GM Toby Rosebud L2-529

S Alliance 3313  
#S Gloria 464  
#Shipwheel Chinook  
#S Blossom 8378  
\*Connealy Product 568  
#Ebonista of Conanga 471  
#+\*GAR Grid Maker  
AhlGrens Toby Rosebud 4335

ADJ. IMF	Ratio
2.58	88
Adj. RE	Ratio
13.8	107
Adj. Rib Fat	Dam's WR
.27	5-100

CED	BEPD	WEPD	YEPD	SC	MILK	CW	Marb	RE		
+4	+2.1	+57	+92	+1.00	+19	+40	+31	+64		
BW	205 WT	Ratio	365 WT	Ratio	ADG	RATIO	\$M	\$W	\$B	\$C
86	671	92	1114	95	2.41	87	+70	+55	+124	+231

- A moderate framed 255 son that is very correct in his phenotype. He is clean fronted and level over his top and into his hip. This flush brother to Lot 40 has lots of the same characteristics. He is very efficient and will sire very productive, moderate framed, efficient replacement heifers that will make great mother cows.
- Suitable for cows.

## 56 WL Payweight 0176

Birth Date: 04-15-2020

Bull 19832276

Tattoo: 0176

#+\*Basin Payweight 1682  
Brooks Payweight 687  
18578099 #Princess 4382 BCBR

ANGUSGS  
+\*TEX Playbook 5437

Princess 8374 BCBR  
19252722 #Princess 2433 BCBR

#+\*Basin Payweight 006S  
21AR O Lass 7017  
EXAR Hoover Dam 1542B  
Princess 1762 BCBR  
#+\*Basin Payweight 1682  
+\*Rita 1C43 of 9M26 Complete  
#Sitz Upward 307R  
Princess 7244 BCBR

ADJ. IMF	Ratio
4.41	129
Adj. RE	Ratio
13.9	98
Adj. Rib Fat	Dam's WR
.38	1-105

CED	BEPD	WEPD	YEPD	SC	MILK	CW	Marb	RE		
+8	+1	+63	+112	+72	+29	+50	+1.15	+63		
BW	205 WT	Ratio	365 WT	Ratio	ADG	RATIO	\$M	\$W	\$B	\$C
73	724	105	1217	103	3.52	110	+80	+73	+165	+294

- This moderate framed bull weighed up very well at weaning with a 105 ratio. The highest Marbling EPD bull in the sale. His \$Maternal, \$Grid, and \$Beef are in the top 5%, 6% and 10%, respectively. A moderate birth, well rounded bull that checks all the boxes.
- Suitable for heifers and cows.



# WENDEL LIVESTOCK ANGUS BULLS

## 57 WL Comrade 0117

Birth Date: 03-23-2020

Bull \*19832300

Tattoo: 0117

#\*Connealy Comrade 1385  
**\*WL Comrade 610**  
 18689082 \*WL 213 Rosebud 2107-490

ANGUSGS

\*S Chisum 5107

WL 5107 Lady 541-7163

18980129 WL 213 Lady 0746-541

#\*Connealy Consensus 7229  
 Happy Gee of Conanga 919  
 Mc Cumber Fortunate 213  
 +\*WL FP Rosebud 529-2107

\*S Chisum 255

#S Rita 6341

Mc Cumber Fortunate 213

RB Lady CC&7-746-0746

ADJ. IMF	Ratio
2.19	64
Adj. RE	Ratio
16.0	113
Adj. Rib Fat	Dam's WR
.45	1-93

CED	BEPD	WEPD	YEPD	SC	MILK	CW	Marb	RE		
+10	+.1	+70	+123	+1.81	+34	+39	+.06	+.81		
BW	205 WT	Ratio	365 WT	Ratio	ADG	RATIO	\$M	\$W	\$B	\$C
67	692	100	1177	100	3.24	101	+60	+85	+95	+183

- A typical patterned 610 son as he is big middled and packed with muscle. A heifer bull to big growth that has a high SC, Milk, RE and \$Weaning EPDs. His dam is from the Lady family that adds production.
- Suitable for heifers and cows.



WL Tribute 070 - Lot 59

## 59 WL Tribute 070

Birth Date: 03-12-2020

Bull 19848407

Tattoo: 070

+Mc Cumber Tremendous 2008 #+OCC Tremendous 619T  
**\*Mc Cumber Tribute 702**  
 18844381 #\*Lassie 113 of Mc Cumber  
 #\*OCC Missing Link 830M  
 #Lassie 935 OF Mc Cumber

ANGUSGS

\*Mohnen Objective 1220

#WL 1220 Ms Blackcap 712-3134

17633069 WL IF Ms Blackcap 562-712

#\*SS Objective T510 OT26

+Mohnen Erianna 2576

#\*Mytty In Focus

#WL 308 Ms Blackcap 319-562

ADJ. IMF	Ratio
2.44	72
Adj. RE	Ratio
14.2	100
Adj. Rib Fat	Dam's WR
.40	6-108

CED	BEPD	WEPD	YEPD	SC	MILK	CW	Marb	RE		
+6	+1.3	+52	+91	+1.17	+31	+35	+.28	+.44		
BW	205 WT	Ratio	365 WT	Ratio	ADG	RATIO	\$M	\$W	\$B	\$C
90	691	100	1200	102	3.52	110	+62	+63	+99	+190

- This moderate framed Tribute son has a super pedigree that is packed with high production. His dam and great-grandam are both Pathfinders where his dam is 6@108 NR. He is good footed and big middled that follow this sire group.
- Suitable for cows.



WL Chisum 0129 - Lot 58

## 58 WL Chisum 0129

Birth Date: 03-25-2020

Bull 19833171

Tattoo: 0129

#\*S Chisum 6175  
**\*S Chisum 255**  
 17298481 #S Blossom 0278

ANGUSGS

#\*Connealy Consensus 7229

WL 7229 Eileen May 801-319

17633015 WL 0035 Dividend 641-801

S Alliance 3313  
 #S Gloria 464  
 #\*Shipwheel Chinook  
 #S Blossom 8378

#\*Connealy Consensus

Blue Lilly of Conanga 16

#\*SAV Final Answer 0035

WL 095 Dividend G12-641

ADJ. IMF	Ratio
2.16	63
Adj. RE	Ratio
14.1	99
Adj. Rib Fat	Dam's WR
.40	6-99

CED	BEPD	WEPD	YEPD	SC	MILK	CW	Marb	RE		
+13	-2	+54	+82	+40	+26	+21	+18	+50		
BW	205 WT	Ratio	365 WT	Ratio	ADG	RATIO	\$M	\$W	\$B	\$C
84	689	100	1140	97	3.15	98	+58	+64	+78	+159

- A moderate framed 255 son that is very well balanced in his makeup and deep quartered. He is free moving and brings Consensus and Final Answer on the bottom side of his pedigree which produces a very maternal herd bull. He will be good for replacement heifer production.
- Suitable for heifers and cows.

## 60 WL Excitement 048

Birth Date: 03-04-2020

Bull \*19832318

Tattoo: 048

#\*Basin Excitement  
**\*TLC Excitement 245**  
 18440207 +\*TLC Blackcap 243

ANGUSGS

Mc Cumber Fortunate 213

WL 213 Fancy Beauty 351-7128

18980128 WL 1220 Fancy Beauty 085-351

+Basin Expedition R156  
 Basin Lady S532 AK  
 #+\*SAV Angus Valley 1867  
 Fairdales Blackcap 21

#\*Sinclair Fortunate Son

#+Miss Wix 1539 of Mc Cumber

\*Mohnen Objective 1220

WL 802 Fancy Beauty 7104-085

ADJ. IMF	Ratio
2.77	81
Adj. RE	Ratio
13.7	96
Adj. Rib Fat	Dam's WR
.30	2-106

CED	BEPD	WEPD	YEPD	SC	MILK	CW	Marb	RE		
+14	-2.3	+58	+101	+1.74	+23	+29	+.45	+.56		
BW	205 WT	Ratio	365 WT	Ratio	ADG	RATIO	\$M	\$W	\$B	\$C
67	717	104	1119	95	2.50	78	±58	±63	±101	±189

- This calving-ease 245 son is extended from end to end. His dam, 7128, is a Fortunate daughter that boasts 2@84 birth ratio, 2@106 on weaning production, and had Lot 1 in last year's sale. A solid carcass trait bull that will sire calves that grow.
- Suitable for heifers and cows.



# WENDEL LIVESTOCK ANGUS BULLS

## 61 WL Excitement 032W

Birth Date: 04-03-2020

Bull \*19832253

Tattoo: 032W

#\*Basin Excitement

+Basin Expedition R156

\*TLC Excitement 245

Basin Lady 5532 AK

18440207 +\*TLC Blackcap 243

#+\*SAV Angus Valley 1867

Fairdales Blackcap 21

ANGUSGS

#\*S Whitlock 179

#\*S Chisum 6175

+\*WL 179 Fancy Beauty 953-815W

#S Pride Anna 709

19383735 WL 0035 Fancy Beauty 435-953

#\*SAV Final Answer 0035

WL 5321 Fancy Beauty 231-435

ADJ. IMF	Ratio
2.48	87
Adj. RE	Ratio
13.8	101
Adj. Rib Fat	Dam's WR
.25	1-99

CED	BEPD	WEPD	YEPD	SC	MILK	CW	Marb	RE		
+6	+9	+77	+144	+1.44	+35	+70	+58	+58		
BW	205 WT	Ratio	365 WT	Ratio	ADG	RATIO	\$M	\$W	\$B	\$C
77	703	99	1193	99	3.15	95	+59	+87	+164	+272

• A high growth 245 son that scores well in every category. His WW, YW, \$W, and \$F all in top 5% of breed, and \$B in top 10%. His calves will wean off heavy, feed well and excel in carcass traits.

• Suitable for cows.



Rose, Kennedy and Isabel pushing heifers

## 62 WL Comrade 095

Birth Date: 03-19-2020

Bull \*19832306

Tattoo: 095

#\*Connealy Comrade 1385

#\*Connealy Consensus 7229

\*WL Comrade 610

Happy Gee of Conanga 919

18689082 \*WL 213 Rosebud 2107-490

Mc Cumber Fortunate 213

+\*WL FP Rosebud 529-2107

ANGUSGS

#+\*Basin Payweight 1682

#+\*Basin Payweight 0065

WL 1682 Nacoma Q745-6139

21AR O Lass 7017

18694675 Brusett Nacoma Q745

Brusett Timesaver 91

Brusett New Design N406

ADJ. IMF	Ratio
2.38	70
Adj. RE	Ratio
12.1	85
Adj. Rib Fat	Dam's WR
.29	2-96

CED	BEPD	WEPD	YEPD	SC	MILK	CW	Marb	RE		
+7	-6	+71	+122	+53	+30	+53	+23	+48		
BW	205 WT	Ratio	365 WT	Ratio	ADG	RATIO	\$M	\$W	\$B	\$C
77	648	94	1075	91	2.87	89	+70	+85	+126	+233

• A moderate framed 610 son that throws lots of growth into a compact package. His high WW and YW EPDs will make his calves pounds heavy. His moderate Payweight dam is very gentle and easy to get along with.

• Suitable for larger framed heifers and cows.

## 63 WL Comrade 010W

Birth Date: 03-09-2020

Bull \*19832303

Tattoo: 010W

#\*Connealy Comrade 1385

#\*Connealy Consensus 7229

\*WL Comrade 610

Happy Gee of Conanga 919

18689082 \*WL 213 Rosebud 2107-490

Mc Cumber Fortunate 213

+\*WL FP Rosebud 529-2107

ANGUSGS

\*Brooking Bank Note 4040

#+\*Connealy Earnan 076E

+\*WL 4040 Jilt 1665-823W

\*EA Rose 918

19383800 +\*Mohnen Jilt 1665

#+Wulffs Ext 6106

#Mohnen Jilt 910

ADJ. IMF	Ratio
2.86	101
Adj. RE	Ratio
13.1	96
Adj. Rib Fat	Dam's WR
.26	1-94

CED	BEPD	WEPD	YEPD	SC	MILK	CW	Marb	RE		
+11	+1	+65	+109	+19	+30	+43	+35	+86		
BW	205 WT	Ratio	365 WT	Ratio	ADG	RATIO	\$M	\$W	\$B	\$C
62	672	94	1051	87	2.87	86	+60	+77	+125	+222

• Another moderate 610 son by a Jilt cow. A good muscled, attractive phenotype bull that has a big birth to weaning and yearling spread.

• Suitable for heifers and cows.



# PROGRESSIVE CATTLEMEN

RELY ON VITAFERM® CONCEPT-AID®

## DON'T FORGET ABOUT THE OTHER HALF OF THE EQUATION

Our VitaFerm Concept-Aid line is built to benefit more than just your cowherd. Let our products help you get the most out of your bull battery as well.



For more information, contact Brett Tostenson at (320) 226-3915 or visit [www.vitaferm.com](http://www.vitaferm.com) to find a dealer near you.

**VITAFERM** PERFORMANCE THAT PAYS

**BIOZYME**



# WENDEL LIVESTOCK ANGUS HEIFERS

## 65 WL E60 520 4127-043

Birth Date: 03-03-2020

Cow 19833341

Tattoo: 043

### \*Woodhill Blueprint

18876777

ANGUSGS  
Powered by NGS GEN

\*Connealy Confidence Plus

\*Woodhill Evergreen Z291-B233

WL Objective 205

WL 205 520 X64-4127

17940890

Brusett 520 X64

#\*Connealy Confidence 0100

Elbanna of Conanga 1209

\*Tehama Sierra Cut Z118

+\*Woodhill Evergreen U6-Z291

\*Mohnen Objective 1220

+WL GM Blackbird MM 206-065

+\*Brusett Franklin U28

#Brusett 520 Q711

CED	BEPD	WEPD	YEPD	MILK	CW	Marb	RE
+9	+2.1	+70	+118	+24	+37	+.56	+.75
BW	205 WT	Ratio	365 WT	Ratio	\$M	\$W	\$B
91	631	106	1047	105	+63	+71	+119
							+217

- This large outlined, pounds heavy heifer is a great way to start the open heifers. She was the heaviest in the pen at the time of shearing, weighing in at 1,100 lbs. This Blueprint daughter is super long sided without sacrificing length of stride. She is big growth on paper and excellent scoring on her Claw and Angle EPDs. Her larger outlined dam is very extended and has a nice udder. 043 is a standout in many categories and will fit almost any operation.



WL E60 520 4127-043 - Lot 65

## 66 WL 706W Petronite 785-0175

Birth Date: 04-15-2020

Cow \*19832233

Tattoo: 0175

### +\*WL Payweight 706W

18954091

ANGUSGS  
Powered by NGS GEN

#+\*Basin Payweight 1682

WL 0035 Fancy Beauty 435-953

\*SAC Conversation

+\*WL CV Petronite 301-785

18984017

WL 0100 Petronite 151-301

#+\*Basin Payweight 0065

21AR O Lass 7017

#\*SAV Final Answer 0035

WL 5321 Fancy Beauty 231-435

\*Silveiras Conversion 8064

#\*Lafins Farrah 0252

#\*Connealy Confidence 0100

WL 5682 Petronite 9103-151

CED	BEPD	WEPD	YEPD	MILK	CW	Marb	RE
+8	-.4	+64	+120	+36	+52	+.22	+.46
BW	205 WT	Ratio	365 WT	Ratio	\$M	\$W	\$B
75	627	105	1051	105	+62	+80	+125
							+224

- A family favorite as this heifer is very docile, moderate framed, and so broody in her build. She is soggy middled and good hiped. Her fancy and angular Conversation dam is a model cow as she is very feminine, extended in her front third, deep middled, and good uddered while being easy fleshing. 0175 is lighter birth to high growth numbered and is top 15% for Heifer Pregnancy. She will make a highly productive, easy fleshing mama cow.



WL 706W Petronite 785-0175 - Lot 66

## 67 WL 804 Eileen May 788-0134

Birth Date: 03-25-2020

Cow \*19832237

Tattoo: 0134

### PF Cowboy Up 804

19241241

ANGUSGS  
Powered by NGS GEN

\*HA Cowboy Up 5405

PF Emblynette 214

\*S Chisum 255

WL 255 Eileen May 319-788

18983894

WL 7229 Eileen May 801-319

\*HA Outside 3008

#\*HA Blackcap Lady 1602

#MCATL Pure Product 903-55

#SAV Emblynette 8170

#\*S Chisum 6175

#S Blossom 0278

#\*Connealy Consensus 7229

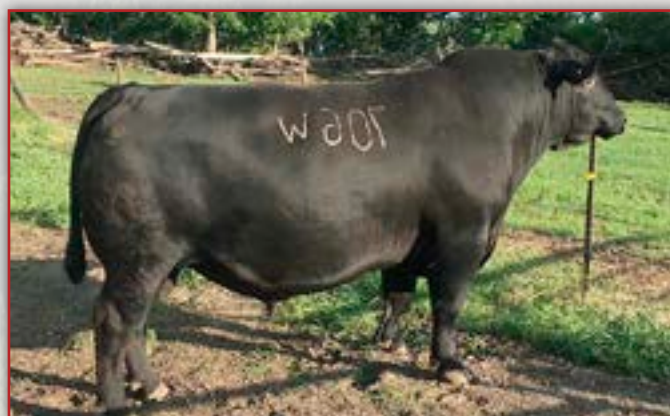
WL 0035 Dividend 641-801

CED	BEPD	WEPD	YEPD	MILK	CW	Marb	RE
+4	+2.7	+75	+125	+24	+50	+.03	+.54
BW	205 WT	Ratio	365 WT	Ratio	\$M	\$W	\$B
87	657	110	1078	108	+56	+75	+113
							+203

- A high growth, high indexing Cowboy Up 804 daughter that is very wide built. She ratioed 110% off her dam and has a balance of growth and maternal in her pedigree. Her Chisum 255 dam is making her mark with 2@107 NR and is well mannered, good uddered, moderate in her frame like most typical 255s. This heifer blends heavy calves at weaning time with depth and length of side and maternal strength.



WL 804 Eileen May 788-0134 - Lot 67



WL Payweight 706W - Sire of Lots 66, 73 & 78.



# WENDEL LIVESTOCK ANGUS HEIFERS



**WL E60 Fancy Beauty 473-0127 - Lot 68**



**WL 610 Ms Queedy 875-052 - Lot 69**



**WL 245 Miss Queedy 8183-0142 - Lot 70**



**WL 255 Eileen 732-069 - Lot 71**

## 68 WL E60 Fancy Beauty 473-0127

Birth Date: 03-25-2020

Cow 19833334

Tattoo: 0127

**\*Woodhill Blueprint**  
18876777

\*Connealy Confidence Plus

\*Woodhill Evergreen Z291-B233

**ANGUS**  
Powered by NEAGEN

**WL 213 Fancy Beauty 758-473**

18690145

Mc Cumber Fortunate 213

WL GI Fancy Beauty 435-758

\*Connealy Confidence 0100

Elbanna of Conanga 1209

\*Tehama Sierra Cut Z118

+\*Woodhill Evergreen U6-Z291

\*Sinclair Fortunate Son

#+Miss Wix 5139 of Mc Cumber

#TC Gridiron 258

WL 5321 Fancy Beauty 231-435

CED	BEPD	WEPD	YEPD	MILK	CW	Marb	RE	
+11	-1.1	+42	+85	+29	+22	+33	+1.04	
BW	205 WT	Ratio	365 WT	Ratio	\$M	\$W	\$B	\$C
73	492	83	892	90	+49	+50	+113	+196

- The most fancy and feminine female in the offering. She is built flashy as she is clean fronted back into a big middle with lots of sweep to her cage. She is level hiped and back over her tailhead. She is free moving and has the right set to her hock. This moderate framed Blueprint daughter has light birth, high milk and very good \$EN that will help make big calves on low inputs.

## 69 WL 610 Ms Queedy 875-052

Birth Date: 03-07-2020

Cow 19832215

Tattoo: 0052

**\*WL Comrade 610**  
18689082

\*Connealy Comrade 1385

\*WL 213 Rosebud 2107-490

**ANGUS**  
Powered by NEAGEN

**WL 420 Ms Queedy 609-875**

16139444

WL E161 Precision 420

WL LO Ms Queedy 211-609

\*Connealy Consensus 7229

Happy Gee of Conanga 919

Mc Cumber Fortunate 213

+\*WL FP Rosebud 529-2107

\*Twin Valley Precision E161

Molitor 043 Blkdb A 930-925

#Connealy Lead On

LBK Ms Queedy 2K11

CED	BEPD	WEPD	YEPD	MILK	CW	Marb	RE	
+12	-9	+63	+117	+36	+45	+37	+53	
BW	205 WT	Ratio	365 WT	Ratio	\$M	\$W	\$B	\$C
67	641	108	1033	104	+66	+80	+123	+226

- A well-rounded female that rolls low birth, high growth and flashy phenotype all into one package. She is larger framed and high in her growth numbers as she ratioed 108 at weaning in a large contemporary group. Her time-tested dam has weaned off 11 calves. You will like this heifer as she is extended through her front third, long sided and is very well mannered.

## 70 WL 245 Miss Queedy 8183-0142

Birth Date: 03-28-2020

Cow 20008854

Tattoo: 0142

**\*TLC Excitement 245**  
18440207

\*Basin Excitement

+\*TLC Blackcap 243

\*WL Recharge 654

**WL 654 Miss Queedy 561-8183**

19382881

#+WL 071 Miss Queedy 595-561

+Basin Expedition R156

Basin Lady 5532 AK

#+\*SAV Angus Valley 1867

Fairdales Blackcap 21

#+\*SAV Recharge 3436

+\*WL 830M Jilt 1665-296

+WL Final Answer 071

#WL 2385 Miss Queedy 206-595

CED	BEPD	WEPD	YEPD	MILK	CW	Marb	RE	
I+12	I+2	I+67	I+118	I+23	I+48	I+33	I+.50	
BW	205 WT	Ratio	365 WT	Ratio	\$M	\$W	\$B	\$C
65	706	100	1044	100	+64	+70	+124	+225

- A deep ribbed, moderate 245 daughter that will catch your eye from the side profile. She is deep middled and very bold about her rib shape. She is level hiped and has plenty of muscle mass.

## 71 WL 255 Eileen 732-069

Birth Date: 03-12-2020

Cow \*19833160

Tattoo: 069

**\*S Chisum 255**  
17298481

\*S Chisum 6175

#S Blossom 0278

**ANGUS**  
Powered by NEAGEN

**WL 23 Eileen 138-732**

18983939

\*MAF Tanker 23

WL 5682 Eileen 563-138

S Alliance 3313

#S Gloria 464

#\*Shipwheel Chinook

#S Blossom 8378

\*Connealy Right Answer 746

Jackie Lass 032 of Tripp

#+SAV Bismarck 5682

#Molitor 411 Eileen G12-515

CED	BEPD	WEPD	YEPD	MILK	CW	Marb	RE	
+9	+6	+50	+87	+19	+21	+47	+72	
BW	205 WT	Ratio	365 WT	Ratio	\$M	\$W	\$B	\$C
78	528	89	984	99	+66	+49	+105	+202

- A high volume female that has the look of a brood cow. She is out of Chisum 255 that is noted for exceptional females that are good uddered and low input. Her +7 \$EN confirms this and she is very easy fleshing. This low birth, low maintenance female also scores well in her foot scores. A heifer that reads "mother cow" very well.



# WENDEL LIVESTOCK ANGUS HEIFERS

## 72 WL 816 Elluna 555-0192

Birth Date: 04-26-2020

Cow \*19832251

Tattoo: 0192

\*WL Chisum 816

19297307

ANGUSGS  
Powered by NEOGEN

WL K360 Elluna 325-555

18269419

\*S Chisum 255

+\*WL 25L Clova Pride X97-6135

\*Plattmeyer Weigh Up K360

WL 0204 Elluna 704-325

#S Chisum 6175

#S Blossom 0278

#+\*Connealy Courage 25L

Brusett Clova Pride X97

#Sitz Upward 307R

#Barbara of Plattmeyer 337

#\*Connealy Irish 0204

WL 0035 Elluna 547-704

CED	BEPD	WEPD	YEPD	MILK	CW	Marb	RE	
+2	+3.0	+87	+148	+25	+67	+20	+92	
BW	205 WT	Ratio	365 WT	Ratio	\$M	\$W	\$B	\$C
84	599	102	956	98	+78	+87	+146	+267

- This nice profiling, high growth female is high in many indexes. Her WW and YW EPDs are in the top 1% and 2%, respectively, in the breed. Her \$M, \$F, and \$W are all top 5% or better. A great blended mating as her sire, 816, is a moderate 255 son and her dam is a large outlined Weigh Up daughter. This April female grew up with the rest of the heifers and has a bright future.



## WL 706W Blackbird 2108-0178 - Lot 73

## 73 WL 706W Blackbird 2108-0178

Birth Date: 04-15-2020

Cow \*19832229

Tattoo: 0178

+\*WL Payweight 706W

18954091

ANGUSGS  
Powered by NEOGEN

#WL 7374 Blackbird 740-2108

17351642

#+\*Basin Payweight 1682

WL 0035 Fancy Beauty 435-953

\*Connealy Mentor 7374

WL 1916 Blackbird 925-740

#+\*Basin Payweight 006S

21AR O Lass 7017

#\*SAV Final Answer 0035

WL 5321 Fancy Beauty 231-435

#GAR Retail Product

#Executa of Conanga 939

+SAV Bandolier 1916

Molitor 043 Blkhd A 930-925

CED	BEPD	WEPD	YEPD	MILK	CW	Marb	RE	
+2	+1.6	+63	+112	+34	+55	+37	+67	
BW	205 WT	Ratio	365 WT	Ratio	\$M	\$W	\$B	\$C
82	556	94	964	99	+72	+76	+134	+246

- This super built, maternal, Payweight 706W daughter is built to stay in the herd. Her HP and \$M are in the top 3% and 10%, respectively. This smooth, extended front and long sided female is one to look up sale day. Her powerful dam, 2108, is 7@104 NR and this daughter has all the characteristics of a great mama cow.

## 74 WL E60 Blackbird 4158-066

Birth Date: 03-09-2020

Cow 19833340

Tattoo: 066

\*Woodhill Blueprint

18876777

ANGUSGS  
Powered by NEOGEN

WL 205 Blackbird MM 087-4158

18015115

\*Connealy Confidence Plus

\*Woodhill Evergreen Z291-B233

WL Objective 205

+WL 004 Blackbird MM 206-087

#\*Connealy Confidence 0100

Elbanna of Conanga 1209

\*Tehama Sierra Cut Z118

+\*Woodhill Evergreen U6-Z291

\*Mohnen Objective 1220

+WL GM Blackbird MM 206-065

+SAV 8180 Traveler 004

Meadow Mist 036-190-206

CED	BEPD	WEPD	YEPD	MILK	CW	Marb	RE	
+10	-2	+60	+112	+16	+38	+38	+68	
BW	205 WT	Ratio	365 WT	Ratio	\$M	\$W	\$B	\$C
73	468	79	900	90	+51	+51	+121	+208

- A nicely balanced Blueprint daughter that has loads of body depth. She is wide topped with lots of natural muscling. Her dam, 4158, is a larger framed Objective 205 daughter that has injected growth and performance into a nicely put together package.

## 75 WL 852 Jilt 544-0180

Birth Date: 04-19-2020

Cow 19832247

Tattoo: 0180

WL Cowboy Up 852

19296364

ANGUSGS  
Powered by NEOGEN

WL 392 Jilt 3106-544

18266310

\*HA Cowboy Up 5405

WL 312 Queen 629-8102

\*WL Confidence 392

+WL 6175 Jilt 1665-3106

\*HA Outside 3008

#\*HA Blackcap Lady 1602

WL 1407 New Design 312

WL 112 Queen 321-629

#\*Connealy Confidence 0100

WL 0035 Fancy Beauty 435-953

#\*S Chisum 6175

+\*Mohnen Jilt 1665

CED	BEPD	WEPD	YEPD	MILK	CW	Marb	RE	
+4	+3.5	+59	+105	+16	+42	+23	+48	
BW	205 WT	Ratio	365 WT	Ratio	\$M	\$W	\$B	\$C
89	615	104	1012	103	+31	+40	+122	+189

- A long bodied, feminine daughter out of Cowboy Up 852 that has lots of rib depth and body capacity. Her dam, 544, is a productive, long sided Jilt cow that goes back to our Mohnen Jilt 1665 cow that served as a donor for several years.

## 76 WL 804 Pride 318-0135

Birth Date: 03-25-2020

Cow 19859199

Tattoo: 0135

PF Cowboy Up 804

19241241

ANGUSGS  
Powered by NEOGEN

WL FP Pride U09-318

17633057

\*HA Cowboy Up 5405

PF Emblynette 214

#\*Connealy Final Product

#Clearwater 004 Pride U09

\*HA Outside 3008

#\*HA Blackcap Lady 1602

#MCATL Pure Product 903-55

#SAV Emblynette 8170

\*Connealy Product 568

#Ebonista of Conanga 471

#SAV 8180 Traveler 004

Clearwater Pride P06

CED	BEPD	WEPD	YEPD	MILK	CW	Marb	RE	
+5	+2.8	+70	+117	+17	+37	+19	+62	
BW	205 WT	Ratio	365 WT	Ratio	\$M	\$W	\$B	\$C
83	564	100	1012	100	+58	+59	+100	+188

- This big bodied, deep sided, feminine fronted heifer that was one of the heaviest in her group when sheared. She is loaded with growth and performance and is in top 2% of breed for Heifer Pregnancy.

## 77 WL 610 Jilt 6162-0119

Birth Date: 03-23-2020

Cow \*19832228

Tattoo: 0119

\*WL Comrade 610

18689082

ANGUSGS  
Powered by NEOGEN

WL 2439 Jilt 380-6162

18694674

#\*Connealy Comrade 1385

\*WL 213 Rosebud 2107-490

S Packer 2439

+WL 6175 Jilt 1665-380

#\*Connealy Consensus 7229

Happy Gee of Conanga 919

Mc Cumber Fortunate 213

+\*WL FP Rosebud 529-2107

#Connealy Packer 547

S Rita 8413

#\*S Chisum 6175

+\*Mohnen Jilt 1665

CED	BEPD	WEPD	YEPD	MILK	CW	Marb	RE	
+10	-2	+62	+115	+31	+43	+61	+68	
BW	205 WT	Ratio	365 WT	Ratio	\$M	\$W	\$B	\$C
78	634	106	978	98	+49	+73	+123	+209

- This long sided, big bodied, easy moving, productive heifer is sired by the high performance Comrade 610 bull. She is bred for growth and performance while backed by the Jilt cow family on the bottom of her pedigree tracing to the Mohnen 1665 donor dam. A true maternal, performance, balanced powerhouse in the making.

## 78 WL 706W LadyBlackcap839-0202

Birth Date: 05-18-2020

Cow 19832216

Tattoo: 0202

+\*WL Payweight 706W

18954091

ANGUSGS  
Powered by NEOGEN

WL 420 Lady Blackcap 565-839

16139431

#+\*Basin Payweight 1682

WL 0035 Fancy Beauty 435-953

WL E161 Precision 420

WL 2385 LadyBlackcap 268-565

#+\*Basin Payweight 006S

21AR O Lass 7017

#\*SAV Final Answer 0035

WL 5321 Fancy Beauty 231-435

#\*Twin Valley Precision E161

Molitor 043 Blkhd A 930-925

+NER Ambush 2385

LBK Lady Blackcap 2K68

CED	BEPD	WEPD	YEPD	MILK	CW	Marb	RE	
+2	+2.4	+66	+119	+26	+47	+34	+65	
BW	205 WT	Ratio	365 WT	Ratio	\$M	\$W	\$B	\$C
87	546	114	N/A	N/A	+53	+63	+143	+238

- This later born daughter of Payweight 706W sizes up with the older heifers in this group. Her longevity dam, 839, has stood the test of time weaning 11 calves. She is deep bodied, clean fronted and will make a great cow.



# WENDEL LIVESTOCK ANGUS HEIFERS

## 79 WL 816 Toby Rosebud 434-0190

Birth Date: 04-26-2020

Cow 19832236

Tattoo: 0190

\*S Chisum 255  
#S Chisum 6175  
#S Blossom 0278  
#\*Connealy Courage 25L  
Brusett Clova Pride X97  
#\*Connealy Confidence 0100  
Connealy Tobin  
Becka Gala of Conanga 8281  
#\*GAR Grid Maker  
Ahlgrens Toby Rosebud 4335

CED	BEPD	WEPD	YEPD	MILK	CW	Marb	RE	
+3	+2.5	+66	+108	+21	+37	+40	+51	
BW	205 WT	Ratio	365 WT	Ratio	\$M	\$W	\$B	\$C
77	484	81	940	94	+86	+70	+112	+231

- This moderate framed daughter from a top Chisum 255 son, 816, is nicely balanced with added muscle expression and depth of body. She ranks in top 3% for \$EN making her a low input maternal powerhouse that is top 2% for \$Maternal. She goes back to our 529 Toby Rosebud donor that is the largest cow family in our herd.

## 80 WL 803W Blackcap 691-0185

Birth Date: 04-23-2020

Cow \*19832250

Tattoo: 0185

+WL Final Answer 071  
#\*SAV Final Answer 0035  
Meadow Mist 036-190-206  
+NER Ambush 2385  
LBK Miss Queedy 2K06  
#\*SAV Recharge 3436  
+Rito 707 of Ideal 3407 7075  
#SAV Blackcap May 4136  
#\*Connealy Irish 0204  
Nelsons Blackcap W936

CED	BEPD	WEPD	YEPD	MILK	CW	Marb	RE	
+1	+2.3	+64	+102	+27	+45	+10	+69	
BW	205 WT	Ratio	365 WT	Ratio	\$M	\$W	\$B	\$C
87	585	94	963	100	+72	+71	+110	+215

- A moderate framed, big middled, deep sided heifer that is level topped and free on the move. She ranks in the top 15% in \$Maternal and is very balanced in her EPD profile. A nice productive female that will be ready to go to work.

## 81 WL 245 LadyBlackcap 855-072

Birth Date: 03-12-2020

Cow \*19832218

Tattoo: 072

#\*Basin Excitement  
+Basin Expedition R156  
Basin Lady S532 AK  
#\*SAV Angus Valley 1867  
Fairdales Blackcap 21  
#HA Outside 3008  
#\*HA Blackcap Lady 1602  
WL E161 Precision 420  
WL 2385 LadyBlackcap 268-565

WE 255 Ladyblackop 206 505								
CED	BEPD	WEPD	YEPD	MILK	CW	Marb	RE	
+9	+1.1	+69	+121	+17	+40	+21	+55	
BW	205 WT	Ratio	365 WT	Ratio	\$M	\$W	\$B	\$C
67	474	80	879	88	+60	+63	+117	+212

- A 245 daughter that is a long, feminine fronted, angular heifer just like the 245s are made. She is bred with growth and performance as she has Cowboy Up on the bottom side of her pedigree and maintains calving ease.

## 82 WL 816 Queen 0101-0194

Birth Date: 05-02-2020

Cow 19832231

Tattoo: 0194

\*S Chisum 255  
#S Chisum 6175  
#S Blossom 0278  
#\*Connealy Courage 25L  
Brusett Clova Pride X97  
#\*Connealy Confidence 0100  
Connealy Tobin  
Becka Gala of Conanga 8281  
#\*GAR Grid Maker  
Ahlgrens Toby Rosebud 4335

CED	BEPD	WEPD	YEPD	MILK	CW	Marb	RE	
-4	+5.2	+79	+131	+26	+58	+73	+41	
BW	205 WT	Ratio	365 WT	Ratio	\$M	\$W	\$B	\$C
97	722	121	1114	111	+57	+71	+145	+245

- A Chisum 816 daughter that is backed by a powerful, highly productive dam, 0101, that is 9@105 NR. A high maternal, productive, longevity female that is very balanced in her EPD profile.

## 83 WL 816 Forever Lady 626-0179

Birth Date: 04-15-2020

Cow \*19832238

Tattoo: 0179

\*S Chisum 255  
#S Chisum 6175  
#S Blossom 0278  
#\*Connealy Courage 25L  
Brusett Clova Pride X97  
#\*Connealy Capitalist 028  
Prides Pita of Conanga 8821  
#\*Leachman Right Time  
+SVF Forever Lady 132K

CED	BEPD	WEPD	YEPD	MILK	CW	Marb	RE	
+2	+1.9	+55	+96	+25	+31	+38	+42	
BW	205 WT	Ratio	365 WT	Ratio	\$M	\$W	\$B	\$C
77	536	90	880	88	+84	+59	+109	+275

- A moderate framed, maternal packed Chisum 816 daughter that is in the top 3% for \$Maternal. She is long and feminine necked that moves with ease. Her bottom side traces back to our donor dam, SVF Forever Lady 132K, which brings performance and maternal traits.

## 84 WL 816 Queen 7114-0156

Birth Date: 03-31-2020

Cow \*19832242

Tattoo: 0156

\*S Chisum 255  
#S Chisum 6175  
#S Blossom 0278  
#\*Connealy Courage 25L  
Brusett Clova Pride X97  
#\*Connealy Confidence 0100  
Connealy Tobin  
Becka Gala of Conanga 8281  
#\*GAR Grid Maker  
Ahlgrens Toby Rosebud 4335

#Eraminm L215 Queen 550								
CED	BEPD	WEPD	YEPD	MILK	CW	Marb	RE	
+11	-1.7	+53	+87	+18	+36	+29	+77	
BW	205 WT	Ratio	365 WT	Ratio	\$M	\$W	\$B	\$C
55	518	87	886	89	+73	+59	+114	+221

- A moderate framed Chisum 816 daughter that is attractive designed and easy fleshing. She is double-bred back to Chisum 255 in her pedigree which will make for years of maternal productivity.

### COMMERCIAL HEIFER INFORMATION

LOT	ID	SIRE	DOB	LOT	ID	SIRE	DOB	LOT	ID	SIRE	DOB
85	061	852	3/9/20	97	0260	7133/684	3/25-4/25	109	0273	330	3/25-4/25
86	0139	852	3/27/20	98	0261	7133/684	3/25-4/25	110	0274	330	3/25-4/25
87	0250	7133/684	3/25-4/25	99	0262	701	3/24/2020	111	0203	852	5/20/20
88	0251	7133/684	3/25-4/25	100	0263	701	4/13/2020	112	0275	330	3/25-4/25
89	0252	7133/684	3/25-4/25	101	0264	330	3/25-4/25	113	0276	330	3/25-4/25
90	0253	7133/684	3/25-4/25	102	0265	330	3/25-4/25	114	0277	330	3/25-4/25
91	0254	7133/684	3/25-4/25	103	0267	701	4/16/2020	115	0278	330	3/25-4/25
92	0255	7133/684	3/25-4/25	104	0268	7133/684	3/25-4/25				
93	0256	7133/684	3/25-4/25	105	0269	7133/684	3/25-4/25				
94	0257	7133/684	3/25-4/25	106	0270	7133/684	3/25-4/25				
95	0258	7133/684	3/25-4/25	107	0271	701	4/8/2020				
96	0259	7133/684	3/25-4/25	108	0272	330	3/25-4/25				

Sires referred to above: WL Cowboy Up 852,  
WL Chisum 7133, WL Final Product 684,  
WL Excitement 701, WL Confidence 330



# REFERENCE SIREs



## Sitz Accomplishment 720F

[AMF-CAF-DZF-DDF-M1F-NHF-OHF-OSF-RDF]

Birth Date: 01-24-2018

Bull \*19078208

Tattoo: 720F

\*Poss Achievement  
18631344

Poss Lasting Impact 3118

\*Poss Erica 327

#+\*SAV Resource 1441

Sitz Barbaramere Nell 166D

18415163 Sitz Barbaramere Nell 14Y

SM	+68
SW	+66
SB	+166
SC	+283

CED	BEPD	WEPD	YEPD	MILK	CW	Marb	RE
+11	+6	+76	+135	+16	+62	+97	+49



## Woodhill Blueprint

[AMF-CAF-DZF-DDF-M1F-NHF-OHF-OSF-RDF]

Birth Date: 02-10-2017

Bull \*18876777

Tattoo: E60

\*Connealy Confidence Plus

17585576

#\*Connealy Confidence 0100

Elbanna of Conanga 1209

\*Tehama Sierra Cut Z118

\*Woodhill Evergreen Z291-B233

17915086 +\*Woodhill Evergreen U6-Z291

SM	+56
SW	+58
SB	+153
SC	+254

CED	BEPD	WEPD	YEPD	MILK	CW	Marb	RE
+9	+4	+58	+115	+25	+41	+70	+1.00



## LD Capitalist 316

[AMF-CAF-DZF-DDF-M1F-NHF-OHF-OSF-RDF]

Birth Date: 01-26-2013

Bull \*17666102

Tattoo: 316

\*Connealy Capitalist 028

16752262

#\*SAV Final Answer 0035

Prides Pita of Conanga 8821

#CA Future Direction 5321

LD Dixie Erica 2053

14407230 LD Dixie Erica Oar 0853

SM	+62
SW	+76
SB	+155
SC	+263

CED	BEPD	WEPD	YEPD	MILK	CW	Marb	RE
+11	-5	+68	+115	+27	+59	+66	+63



## S Chisum 255

[AMF-CAF-DZF-DDF-M1F-NHF-OHF-OSF-RDF]

Birth Date: 03-15-2012

Bull \*17298481

Tattoo: 255

\*S Chisum 6175

15511451

S Alliance 3313

#S Gloria 464

#\*Shipwheel Chinook

#S Blossom 0278

16661905 #S Blossom 8378

SM	+74
SW	+59
SB	+103
SC	+208

CED	BEPD	WEPD	YEPD	MILK	CW	Marb	RE
+13	-3	+57	+90	+18	+33	+21	+64



## WL Comrade 610

Birth Date: 02-20-2016

Bull \*18689082

Tattoo: 610

\*Connealy Comrade 1385

17031465

#\*Connealy Consensus 7229

Happy Gee of Conanga 919

Mc Cumber Fortunate 213

\*WL 213 Rosebud 2107-490

17940873 +\*WL FP Rosebud 529-2107

SM	+46
SW	+95
SB	+152
SC	+243

CED	BEPD	WEPD	YEPD	MILK	CW	Marb	RE
+8	+4	+90	+162	+29	+69	+41	+87



## PF Cowboy Up 804

[DOF]

Birth Date: 02-04-2018

Bull 19241241

Tattoo: 804

\*HA Cowboy Up 5405

18286467

\*HA Outside 3008

#\*HA Blackcap Lady 1602

#MCATL Pure Product 903-55

PF Emblynette 214

17355651 #SAV Emblynette 8170

SM	+29
SW	+67
SB	+134
SC	+203

CED	BEPD	WEPD	YEPD	MILK	CW	Marb	RE
+4	+2.6	+85	+148	+15	+55	+31	+47



## TLC Excitement 245

[CAF-OHF-OSF]

Birth Date: 03-16-2015

Bull \*18440207

Tattoo: 245

#\*Basin Excitement  
16047404

+Basin Expedition R156

Basin Lady S532 AK

#+\*SAV Angus Valley 1867

+\*TLC Blackcap 243

18438150 Fairdales Blackcap 21

SM	+74
SW	+69
SB	+131
SC	+244

CED	BEPD	WEPD	YEPD	MILK	CW	Marb	RE
+16	-2.3	+64	+121	+24	+44	+64	+35



## Connealy Legendary 644L

[AMF-CAF-DZF-DDF-M1F-NHF-OHF-OSF-RDF]

Birth Date: 01-23-2016

Bull \*18534952

Tattoo: 644L

#+\*Quaker Hill Rampage 0A36

16925771

#MCC Daybreak

+\*QHF Blackcap 6E2 of4V16 4355

#Morgans Direction 111 9901

\*Jazzed of Conanga 4660

15475810 Jaze of Conanga 234

SM	+60
SW	+66
SB	+172
SC	+283

CED	BEPD	WEPD	YEPD	MILK	CW	Marb	RE
+10	-9	+68	+112	+17	+48	+1.14	+1.02



## Tehama Patriarch F028

[AMF-CAF-DZF-DDF-M1F-NHF-OHF-OSF-RDF]

Birth Date: 02-03-2017

Bull \*18981191

Tattoo: F028

\*S Niagara Z29

17287387

#\*Hoover Dam

Jet SS X144

#Connealy Thunder

Tehama Elite Blackbird D826

18317128 Tehama Elite Blackbird Z630

SM	+79
SW	+78
SB	+160
SC	+287

CED	BEPD	WEPD	YEPD	MILK	CW	Marb	RE
+14	-2.3	+68	+132	+31	+50	+87	+92



## Mc Cumber Tribute 702

[AMF-CAF-DZF-DDF-M1F-NHF-OHF-OSF-RDF]

Birth Date: 01-09-2017

Bull \*18844381

Tattoo: 702

+Mc Cumber Tremendous 2008

17338585

#+OCC Tremendous 619T

#+Miss Wix 2022 HC Mc Cumber

#\*OCC Missing Link 830M

\*Lassie 113 of Mc Cumber

16980799 #Lassie 935 OF Mc Cumber

SM	+56
SW	+68
SB	+104
SC	+191

CED	BEPD	WEPD	YEPD	MILK	CW	Marb	RE
+14	-1.1	+56	+107	+30	+35	+04	+58



## Casino Bomber N33

[AMF-CAF-DZF-DDF-M1F-NHF-OHF-OSF-RDF]

Birth Date: 01-29-2016

Bull \*18658677

Tattoo: N33

#\*KM Broken Bow 002

16764044

#\*Summitcrest Complete 1P55

#Summitcrest Princess 0P12

DPL Upward L70

\*Casino Annie K48

17713662

Casino Annie G64

SM	+59
SW	+71
SB	+173
SC	+283

CED	BEPD	WEPD	YEPD	MILK	CW	Marb	RE
+14	-1.9	+75	+125	+16	+64	+84	+89



## Koupals B&B Identity

[DOF]

Birth Date: 01-01-2010

Bull \*16710463

Tattoo: 0020

#Sitz Upward 307R

14963730

#\*Connealy Onward

Sitz Henrietta Pride 81M

#+GAR Exaltation 3144

#B&B Erica 605

15462235

B&B Erica 4064

SM	+75
SW	+64
SB	+175
SC	+302

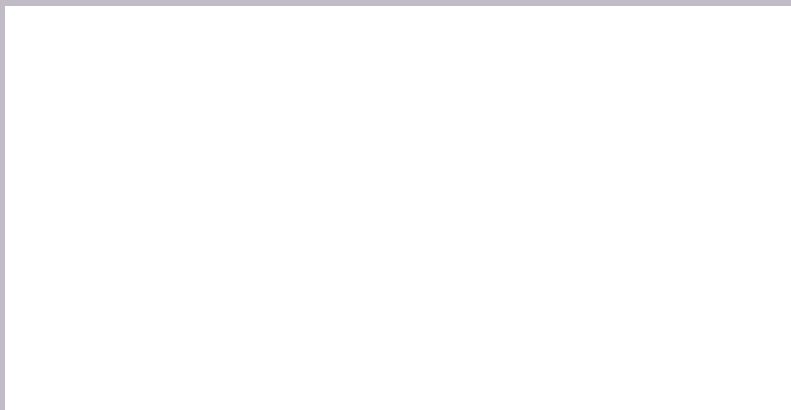
CED	BEPD	WEPD	YEPD	MILK	CW	Marb	RE
+3	+1.8	+57	+110	+32	+61	+70	+75





Mike and Shari Wendel  
10213 68th St. SE  
LaMoure, ND 58458

PRSR  
FIRST-CLASS  
U.S. POSTAGE  
**PAID**  
St. Joseph, MO  
Permit #2017



# WENDEL LIVESTOCK

*Annual Angus Production Sale*

**MAY 10, 2021 • 6 P.M.**

at the farm, near LaMoure, ND

## Wendel Livestock 2020 Carcass Results

**55 head of steer mates to 2020**

**WL Sale Bulls at Tyson Foods:**

27 Prime (49%)

45 Prime and CAB (82%)

55 Choice or better (100%)

\$81.80 Net premium/head



WL Excitement 056 - Lot 1



WL Legendary 001 - Lot 4



WL Cowboy Up 063 - Lot 5



WL E60 520 4127-043 - Lot 65

**wendellivestock.com**